

TEMPLETON ON THE GREEN



space
APARTMENTS

TEMPLETON ON THE GREEN



Templeton on the Green is an iconic, grade A listed architectural landmark. It promises to be a fun, colourful place to live, part of a vibrant new community within a thriving neighbourhood just minutes from the centre of one of Europe's most cosmopolitan cities.

space
APARTMENTS



The Space Apartments have been created for people who prefer city living but look for the highest quality with modern features designed for comfort and easy maintenance.

Features include private car parking and attractive contemporary interior, with the penthouse apartments enjoying private roof gardens.

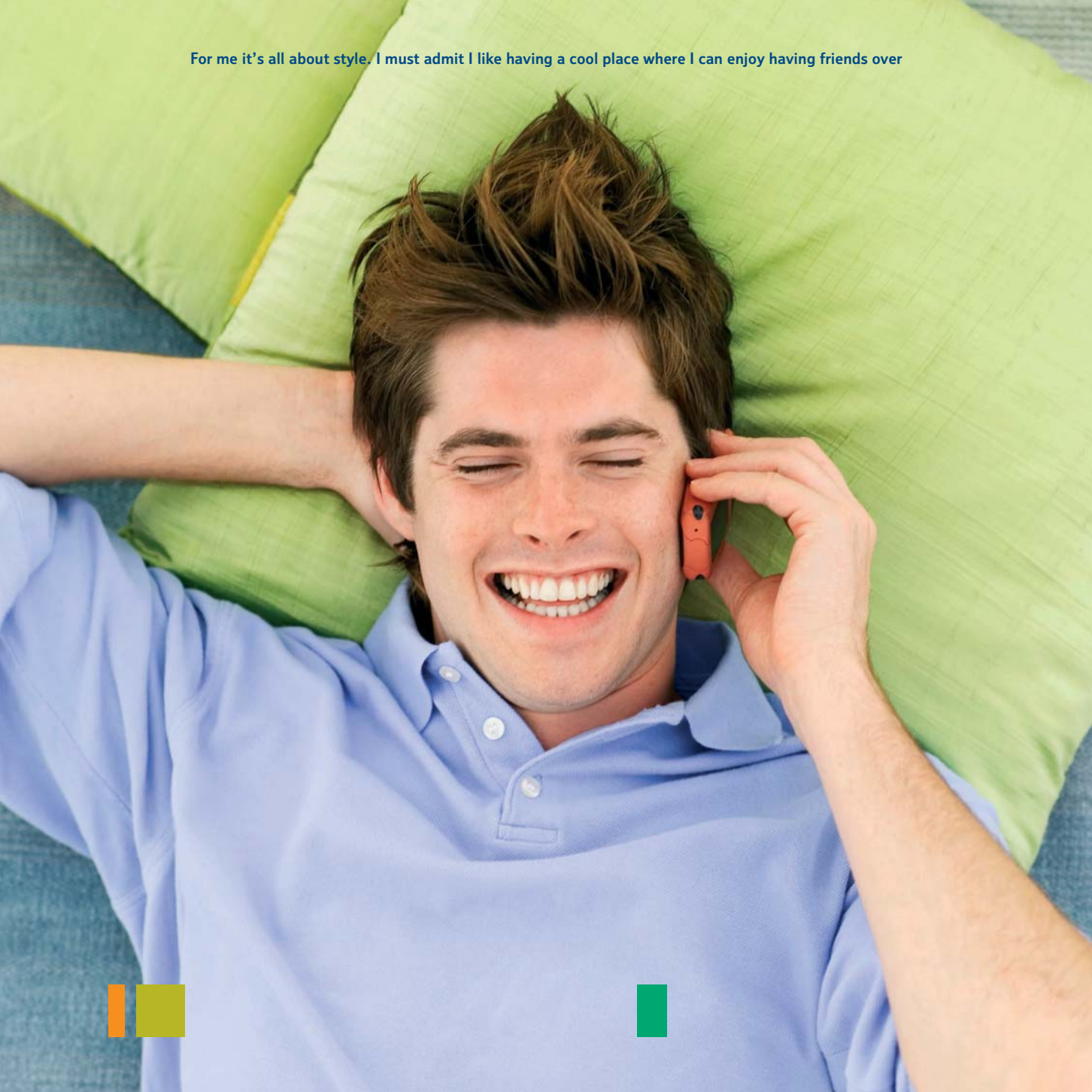


Life in colour

Overlooking the famous Glasgow Green, in the city's bustling East End, are the Space Apartments, stylish, light filled residences in a superb location. Part of the inspired redevelopment of Templeton on the Green, the development includes studio, one, two and three bedroom apartments, finished to the most exacting standards and benefiting from secure courtyard parking and stunning cityscape views. Residents also have access to a gym, child care facilities, integral food and leisure outlets and a tranquil sculpture garden.



For me it's all about style. I must admit I like having a cool place where I can enjoy having friends over



Do some blue sky thinking

The ornate Templeton on the Green building was originally modelled on no less a place than the Doge's Palace in Venice. Its fascinating architecture, beautiful decorative brick facade and magnificent views over Glasgow's awesome skyline mean that life here should be both stimulating and inspirational. To live here is to have a place to be yourself, make plans and pursue dreams in both style and comfort.





My priority is good connections to the city centre - I work hard and I'm not interested in a long commute



room to move



Take a breath of fresh air

In a city famous for its 'dear green places' none is older or better known than Glasgow Green itself. The Green, currently undergoing a lottery-funded renaissance, is a revitalising open space in the heart of the metropolis. It is also home to the famous People's Palace museum which houses everything including the kitchen sink! With the Green on your doorstep you're not only overlooking a piece of Glasgow history, you have the perfect place to get out into the fresh air to relax and people watch.



Space & Light

I work from home so I need somewhere that feels spacious and light. A great view can be inspirational.



Let the sun shine in

Sunlight is good for the soul: the apartments at Templeton on the Green boast generous windows which let the light to flood in to their fresh, bright interiors. With quality appliances, sleek finishing touches, integrated broadband and fibre related services and excellent security features, each apartment is a perfect example of the type of modern living space which accommodates a contemporary lifestyle so well.





It's important to me to live in a part of town where things are going on. I like to feel part of an interesting community.



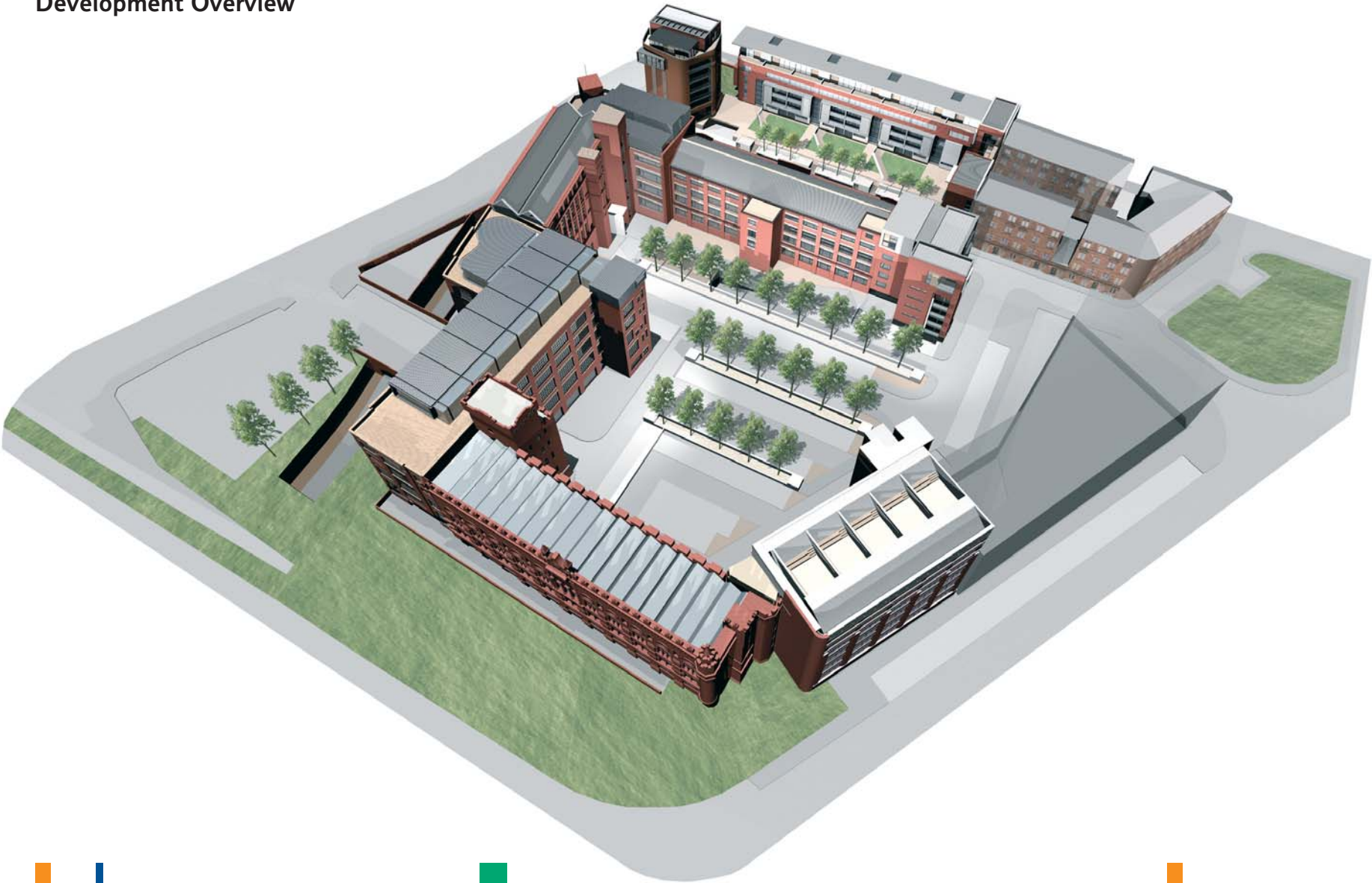
Paint the town Red

Glasgow's East End pulsates with life and is well served for restaurants, shops and recreational amenities. Glasgow is one of Europe's most exciting cities and is highly regarded as a cultural heartland. Its centre, with everything you need to pursue a cutting-edge urban lifestyle, can be reached from Templeton on the Green within minutes.

You need never be bored again!

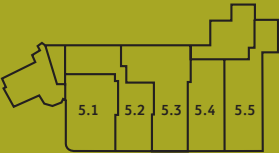


Development Overview



Space apartments levels

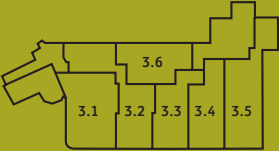
Fifth Level
4 two bed. 1 one bed
1 one bed



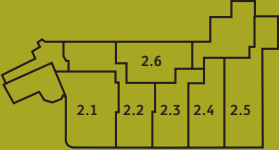
Fourth Level
4 two bed. 1 one bed
1 one bed, courtyard



Third Level
4 two bed. 1 one bed
1 one bed, courtyard



Second Level
4 two bed. 1 one bed
1 one bed, courtyard



First Level
4 two bed. 1 one bed
1 one bed, courtyard



Ground Level
1 three bed. 3 two bed
1 one bed



Space Apartments Elevation



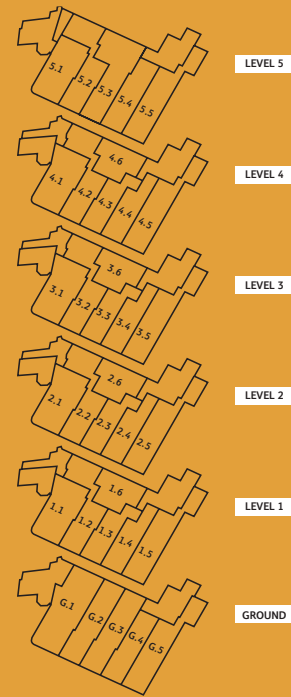
Ground Level

Twelve space apartments

G1 THREE BEDROOM

G2 ONE BEDROOM

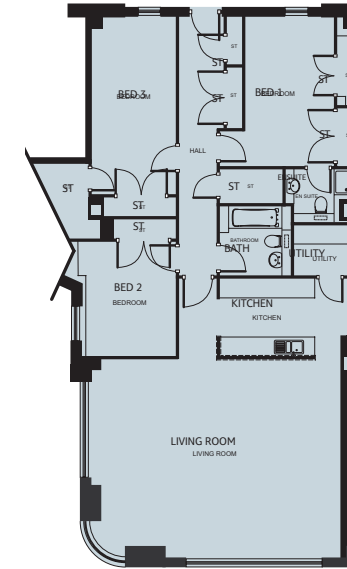
Entry to each apartments
is via the courtyard entrance.



All room sizes have been given as maximum. All plans in this brochure are not drawn to scale and are for illustrative purposes only. Consequently they do not form part of any contract. Please refer to the "Important Notice" section at the back of the brochure for more information.

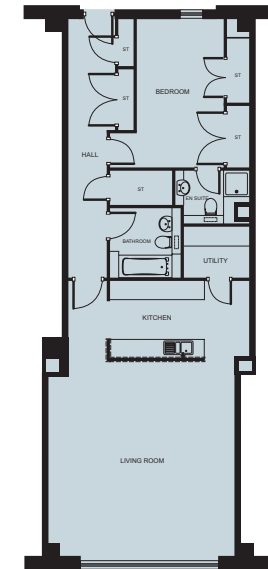


G.1 THREE BEDROOM



LIVING ROOM	7749	x	7600	25'5"	x	20'3"
KITCHEN	4436	x	2442	14'7"	x	8'0"
UTILITY	1867	x	737	6'2"	x	5'8"
BED 1	4717	x	4005	15'6"	x	13'3"
ENSUITE	2345	x	1410	7'8"	x	4'8"
BED 2	6217	x	2672	20'5"	x	8'9"
BED 3	4222	x	2842	13'11"	x	9'4"
BATH	2200	x	1975	7'3"	x	6'6"
HALL	8197	x	1430	26'11"	x	4'8"

G.2 ONE BEDROOM



LIVING ROOM	6149	x	5897	20'2"	x	19'4"
KITCHEN	4437	x	2450	14'7"	x	8'1"
UTILITY	2090	x	1600	6'10"	x	5'3"
BED 1	4702	x	3894	15'5"	x	13'1"
ENSUITE	2345	x	1410	7'8"	x	4'8"
BATH	2200	x	1977	7'3"	x	6'8"
HALL	8060	x	1485	26'6"	x	4'11"

Ground Level

Twelve space apartments

G1 THREE BEDROOM

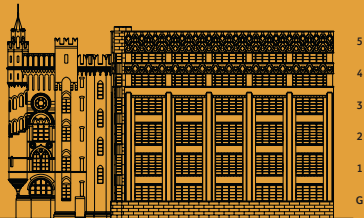
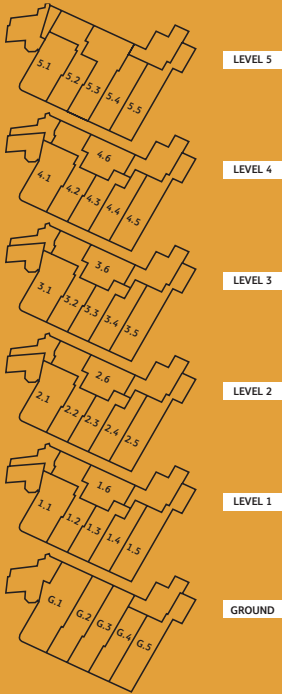
G2 ONE BEDROOM

G3 ONE BEDROOM

G4 ONE BEDROOM

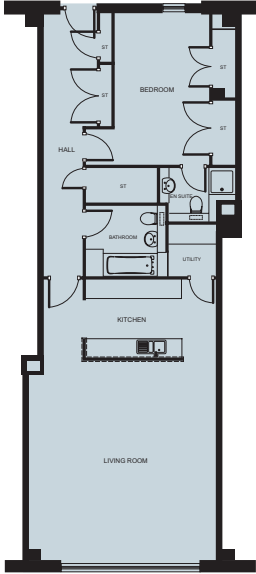
G5 TWO BEDROOM

Entry to each apartments
is via the courtyard entrance.



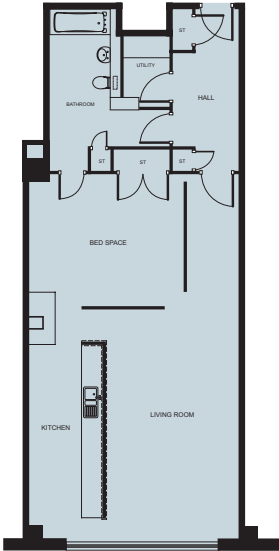
All room sizes have been given as maximum. All plans in this brochure are not drawn to scale and are for illustrative purposes only. Consequently they do not form part of any contract. Please refer to the "Important Notice" section at the back of the brochure for more information.

G.3 ONE BEDROOM



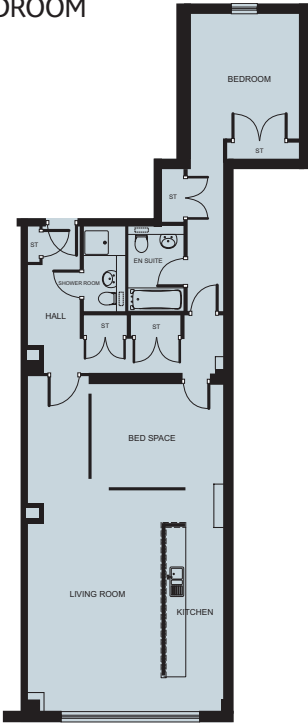
LIVING ROOM	6149	x	5886	20'2"	x	19'4"
KITCHEN	4088	x	2450	13'5"	x	8'1"
UTILITY	1600	x	1500	5'3"	x	4'11"
BED 1	4702	x	4021	15'5"	x	13'2"
ENSUITE	2348	x	1410	7'8"	x	4'8"
BATH	2218	x	2200	7'3"	x	7'3"
HALL	8045	x	1650	26'5"	x	5'5"

G.4 ONE BEDROOM



LIVING ROOM	6387	x	3743	21'0"	x	12'3"
KITCHEN	4873	x	2065	16'0"	x	6'9"
UTILITY	1985	x	1300	6'6"	x	4'3"
BED 1	4358	x	4333	15'5"	x	15'2"
BATH	4555	x	3208	14'11"	x	10'9"
HALL	4555	x	1860	14'11"	x	6'1"

G.5 TWO BEDROOM



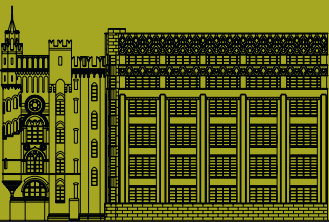
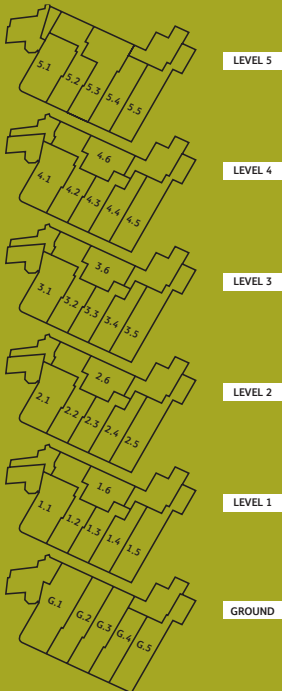
LIVING ROOM	10226	x	4162	33'7"	x	13'8"
KITCHEN	4605	x	1711	15'1"	x	5'7"
UTILITY	1985	x	1300	6'6"	x	4'3"
BED 1	9075	x	3168	29'9"	x	10'5"
ENSUITE	2380	x	1720	7'10"	x	5'8"
BED SPACE 2	4000	x	3150	13'2"	x	10'4"
SHOWER	2535	x	1030	14'11"	x	3'5"
HALL	4555	x	1860	14'11"	x	6'1"

Levels 1 & 2

Twelve space apartments

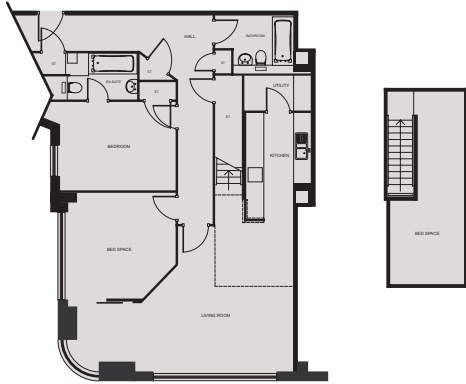
- 1.1 TWO BEDROOM GALLERY
- 1.2 THREE BEDROOM GALLERY
- 1.3 TWO BEDROOM GALLERY
- 1.4 TWO BEDROOM GALLERY
- 1.5 TWO BEDROOM GALLERY
- 1.6 TWO BEDROOM COURTYARD

- 2.1 TWO BEDROOM GALLERY
- 2.2 THREE BEDROOM GALLERY
- 2.3 TWO BEDROOM GALLERY
- 2.4 TWO BEDROOM GALLERY
- 2.5 TWO BEDROOM GALLERY
- 2.6 TWO BEDROOM COURTYARD



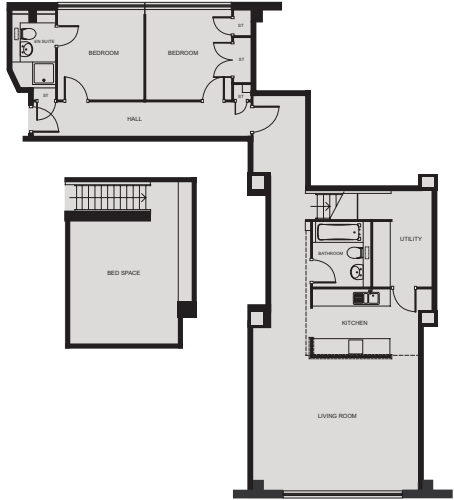
All room sizes have been given as maximum. All plans in this brochure are not drawn to scale and are for illustrative purposes only. Consequently they do not form part of any contract. Please refer to the "Important Notice" section at the back of the brochure for more information.

1.1 / 2.1 TWO BEDROOM GALLERY



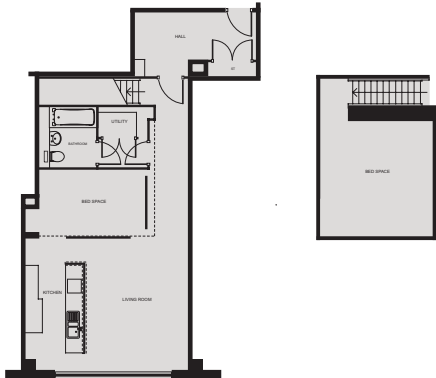
LIVING ROOM	7434	x	5161	24'5"	x	16'11"
KITCHEN	3690	x	2250	12'1"	x	7'5"
UTILITY	2320	x	1220	7'7"	x	4'0"
BED 1	3927	x	3084	12'11"	x	10'2"
ENSUITE	2460	x	1610	8'1"	x	5'3"
BED SPACE 2	3707	x	3648	12'2"	x	12'0"
BED SPACE 3	6721	x	2546	22'0"	x	8'4"
BATH	2702	x	1710	8'10"	x	5'7"
HALL	7275	x	1200	23'11"	x	3'11"

1.2 / 2.2 THREE BEDROOM



LIVING ROOM	5897	x	4584	24'5"	x	16'11"
KITCHEN	3764	x	2370	12'4"	x	7'9"
UTILITY	3415	x	2096	11'3"	x	6'10"
BED	3058	x	3052	10'0"	x	10'0"
ENSUITE	2213	x	1235	7'3"	x	4'1"
BED SPACE 2	3058	x	3052	10'0"	x	10'0"
BED SPACE 3	4317	x	3863	14'2"	x	12'8"
BATH	2300	x	1795	7'7"	x	5'11"
HALL	8319	x	1385	27'4"	x	4'7"

1.3 / 2.3 TWO BEDROOM



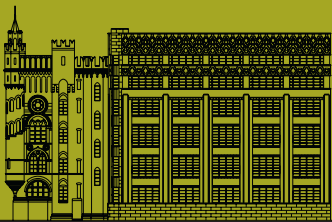
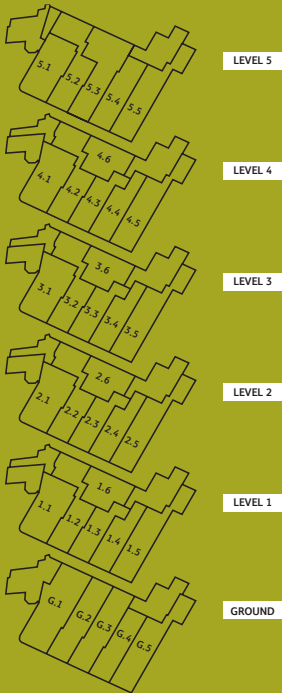
LIVING ROOM	4688	x	3721	15'5"	x	12'3"
KITCHEN	0000	x	2065	00'0"	x	6'9"
BED 1	3927	x	3084	12'11"	x	10'2"
ENSUITE	2460	x	1610	8'1"	x	5'3"
BED SPACE 2	4037	x	4011	13'3"	x	13'2"
BATH	2200	x	1705	7'3"	x	5'7"
HALL	4358	x	2211	14'4"	x	7'3"

Levels 1 & 2

Twelve space apartments

- 1.1 TWO BEDROOM GALLERY
- 1.2 THREE BEDROOM GALLERY
- 1.3 TWO BEDROOM GALLERY
- 1.4 TWO BEDROOM GALLERY
- 1.5 TWO BEDROOM GALLERY
- 1.6 TWO BEDROOM COURTYARD

- 2.1 TWO BEDROOM GALLERY
- 2.2 THREE BEDROOM GALLERY
- 2.3 TWO BEDROOM GALLERY
- 2.4 TWO BEDROOM GALLERY
- 2.5 TWO BEDROOM GALLERY
- 2.6 TWO BEDROOM COURTYARD



All room sizes have been given as maximum. All plans in this brochure are not drawn to scale and are for illustrative purposes only. Consequently they do not form part of any contract. Please refer to the "Important Notice" section at the back of the brochure for more information.

1.4 / 2.4 TWO BEDROOM



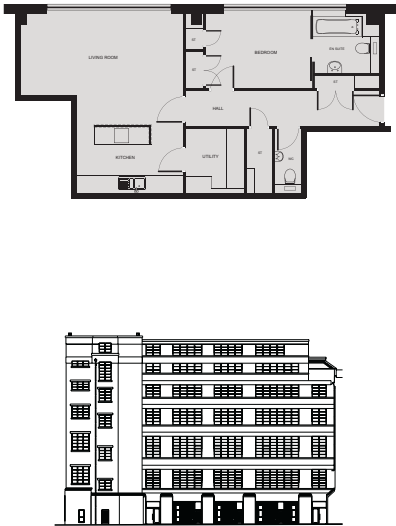
LIVING ROOM	4686	x	3743	15'5"	x	12'3"
KITCHEN	0000	x	2065	00'0"	x	6'9"
UTILITY	1987	x	1497	6'6"	x	4'11"
BED 1	4328	x	3823	14'3"	x	12'7"
BED SPACE 3	3889	x	3666	12'9"	x	12'0"
BATH	2300	x	1710	7'7"	x	5'7"
HALL	2737	x	1850	9'0"	x	6'1"

1.5 / 2.5 TWO BEDROOM



LIVING ROOM	6376	x	5973	20'11"	x	19'7"
KITCHEN	4060	x	2550	13'4"	x	8'4"
UTILITY	1910	x	1800	6'3"	x	5'11"
BED 1	9075	x	3168	29'9"	x	10'5"
ENSUITE	2380	x	1720	7'10"	x	5'8"
BED SPACE 2	5891	x	3848	12'9"	x	12'0"
SHOWER	2535	x	1030	8'4"	x	3'5"
HALL	5973	x	1200	19'7"	x	3'11"

1.6 / 2.6 TWO BEDROOM COURTYARD



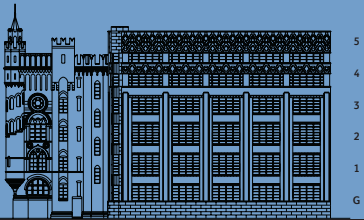
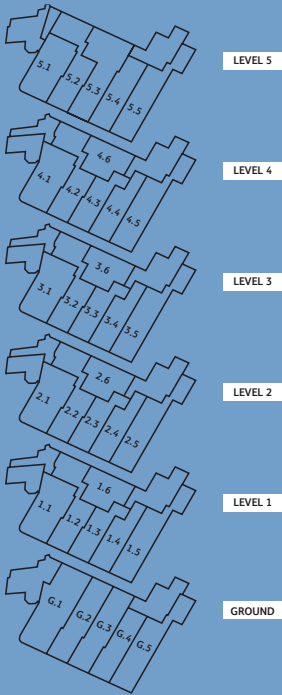
LIVING ROOM	5639	x	3687	18'6"	x	13'8"
KITCHEN	3687	x	2385	12'1"	x	7'10"
BED 1	3646	x	2528	12'0"	x	8'4"
ENSUITE	2229	x	1978	7'4"	x	6'6"
UTILITY	2048	x	1641	6'9"	x	5'5"
HALL	6545	x	1200	22'2"	x	3'11"

Levels 3 & 4

Twelve space apartments

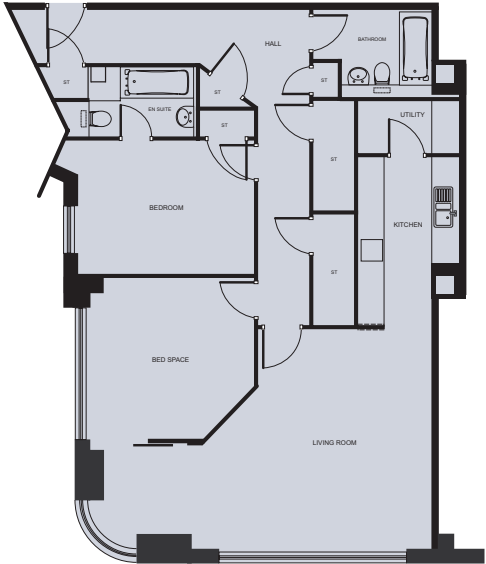
- 3.1 TWO BEDROOM
- 3.2 THREE BEDROOM
- 3.3 TWO BEDROOM
- 3.4 TWO BEDROOM
- 3.5 TWO BEDROOM
- 3.6 TWO BEDROOM

- 4.1 TWO BEDROOM
- 4.2 ONE BEDROOM
- 4.3 ONE BEDROOM
- 4.4 ONE BEDROOM
- 4.5 ONE BEDROOM
- 4.6 TWO BEDROOM



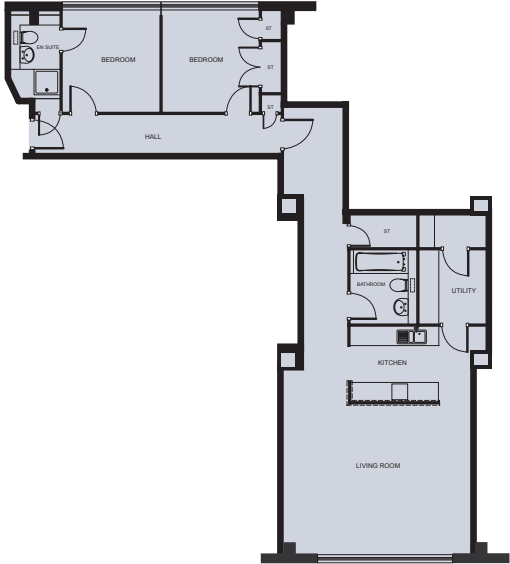
All room sizes have been given as maximum. All plans in this brochure are not drawn to scale and are for illustrative purposes only. Consequently they do not form part of any contract. Please refer to the "Important Notice" section at the back of the brochure for more information.

3.1 / 4.1 TWO BEDROOM



LIVING ROOM	7434	x	4976	24'5"	x	16'4"
KITCHEN	3875	x	2320	12'9"	x	7'7"
UTILITY	2320	x	1220	7'7"	x	4'0"
BED 1	3927	x	3084	12'11"	x	10'4"
ENSUITE	2460	x	1610	8'1"	x	5'3"
BED SPACE 2	3707	x	3648	12'2"	x	12'0"
BATH	2702	x	1710	8'10"	x	5'2"
HALL (MAX)	7275	x	1200	23'11"	x	3'11"

3.2 / 4.2 THREE BEDROOM



LIVING ROOM	5897	x	4669	19'4"	x	15'4"
KITCHEN	3789	x	2370	12'5"	x	7'9"
UTILITY	2300	x	2094	6'10"	x	7'7"
BED 1	3058	x	3052	10'0"	x	10'0"
ENSUITE	2213	x	1235	7'3"	x	4'1"
BED SPACE 2	3058	x	3052	10'0"	x	10'0"
BATH	2300	x	1820	13'1"	x	6'0"
HALL	8139	x	1200	27'4"	x	3'11"

3.3 / 4.3 ONE BEDROOM



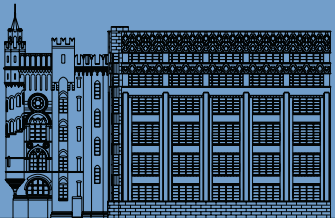
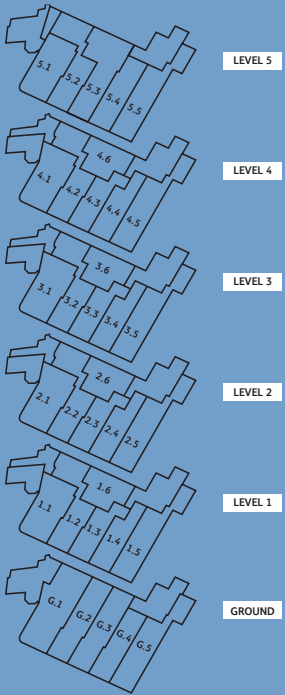
LIVING ROOM	5639	x	3687	18'6"	x	13'8"
LIVING ROOM	4559	x	3721	15'0"	x	12'3"
KITCHEN	3165	x	2056	10'5"	x	6'9"
UTILITY	1448	x	1175	4'9"	x	3'10"
BED 1	3993	x	2450	13'1"	x	8'1"
BATH	3260	x	1705	10'9"	x	5'1"
HALL	4358	x	2131	24'4"	x	7'0"

Levels 3 & 4

Twelve space apartments

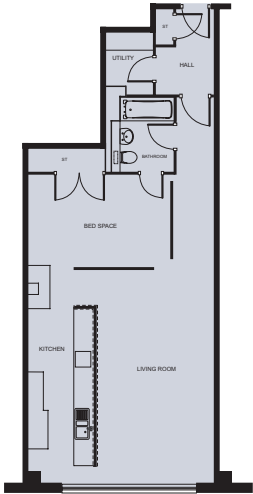
- 3.1 TWO BEDROOM
- 3.2 THREE BEDROOM
- 3.3 TWO BEDROOM
- 3.4 TWOBEDROOM
- 3.5 TWO BEDROOM
- 3.6 TWO BEDROOM

- 4.1 TWO BEDROOM
- 4.2 ONE BEDROOM
- 4.3 ONE BEDROOM
- 4.4 ONE BEDROOM
- 4.5 ONE BEDROOM
- 4.6 TWO BEDROOM



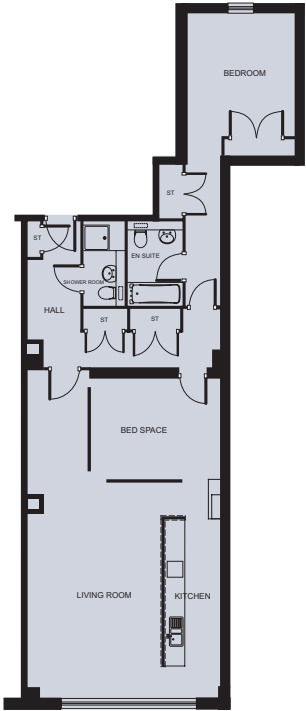
All room sizes have been given as maximum. All plans in this brochure are not drawn to scale and are for illustrative purposes only. Consequently they do not form part of any contract. Please refer to the "Important Notice" section at the back of the brochure for more information.

3.4 / 4.4 ONE BEDROOM



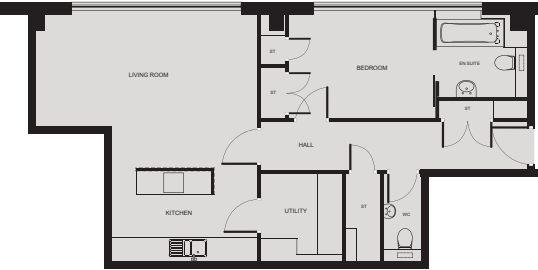
LIVING ROOM	0000	x	3743	00'0"	x	12'3"
KITCHEN	0000	x	2065	00'0"	x	6'9"
UTILITY	1987	x	1497	6'6"	x	4'11"
BED 1	4508	x	2900	14'10"	x	9'6"
BATH	2300	x	1710	7'7"	x	5'7"
HALL	2737	x	1850	9'0"	x	6'1"

3.5 / 4.5 TWO BEDROOM



LIVING ROOM	6707	x	4142	22'0"	x	13'8"
KITCHEN	4605	x	1781	15'1"	x	5'10"
BED 1	4250	x	3168	13'11"	x	10'5"
ENSUITE	2380	x	1720	7'10"	x	5'8"
BED SPACE 2	4000	x	3150	13'2"	x	10'4"
HALL	5490	x	4550	18'0"	x	14'11"

3.6 / 4.6 TWO BEDROOM COURTYARD

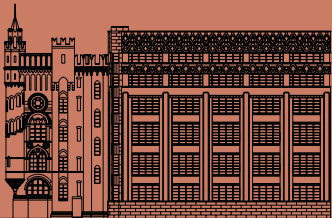
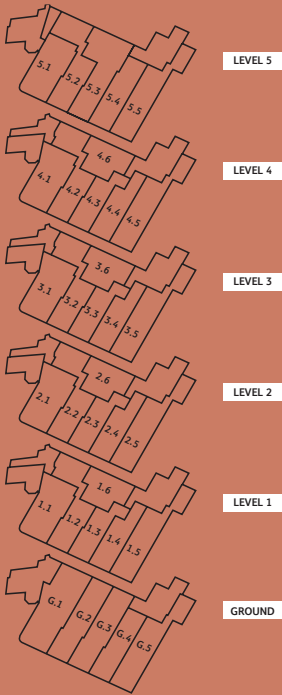


LIVING ROOM	5639	x	3687	18'6"	x	13'8"
KITCHEN	3687	x	2385	12'1"	x	7'10"
BED 1	3646	x	2528	12'0"	x	8'4"
ENSUITE	2229	x	1978	7'4"	x	6'6"
UTILITY	2048	x	1641	6'9"	x	5'5"
HALL	6545	x	1200	22'2"	x	3'11"

Level 5 Penthouse

Five space apartments

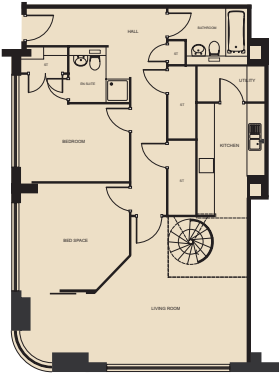
- 5.1 TWO BEDROOM
- 5.2 THREE BEDROOM
- 5.3 TWO BEDROOM
- 5.4 ONE BEDROOM
- 5.5 TWO BEDROOM



All room sizes have been given as maximum. All plans in this brochure are not drawn to scale and are for illustrative purposes only. Consequently they do not form part of any contract. Please refer to the "Important Notice" section at the back of the brochure for more information.

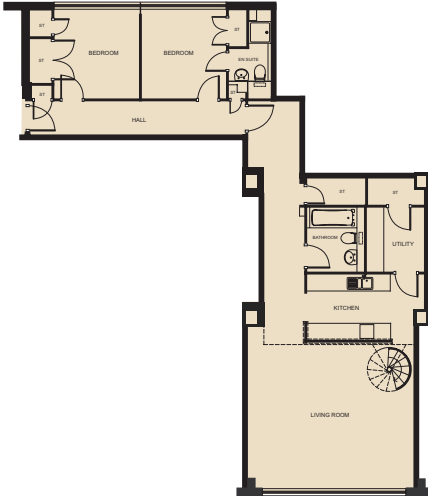


5.1 TWO BEDROOM ROOF TERRACE



LIVING ROOM	7445	x	5035	24'5"	x	16'6"
KITCHEN	3815	x	2290	12'6"	x	7'6"
BED 1	3811	x	3810	12'6"	x	12'6"
ENSUITE	2120	x	1660	7'0"	x	5'5"
BED SPACE 2	3711	x	3666	12'2"	x	12'0"
BATH	2757	x	1710	9'1"	x	5'7"
HALL	7215	x	1200	23'8"	x	3'11"

5.2 TWO BEDROOM ROOF TERRACE

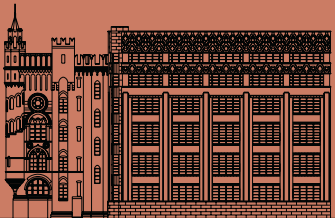
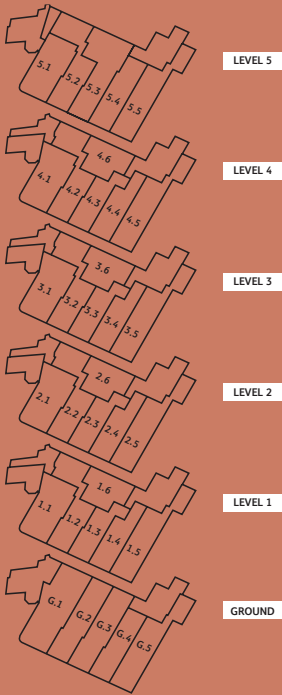


LIVING ROOM	5952	x	5087	19'6"	x	16'8"
KITCHEN	3853	x	2370	12'8"	x	7'9"
UTILITY	2300	x	2200	7'7"	x	6'7"
BED 1	3058	x	3055	10'1"	x	10'0"
ENSUITE	2120	x	1502	7'0"	x	4'11"
BED SPACE 2	3058	x	3055	10'1"	x	10'0"
BATH	2300	x	1820	7'7"	x	6'0"
HALL	8091	x	1200	26'7"	x	3'11"

Level 5 Penthouse

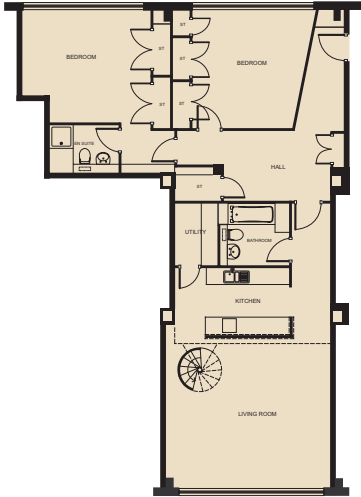
Five space apartments

- 5.1 TWO BEDROOM
- 5.2 THREE BEDROOM
- 5.3 TWO BEDROOM
- 5.4 ONE BEDROOM
- 5.5 TWO BEDROOM



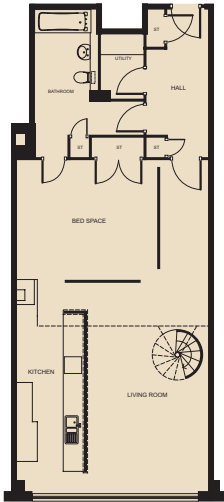
All room sizes have been given as maximum. All plans in this brochure are not drawn to scale and are for illustrative purposes only. Consequently they do not form part of any contract. Please refer to the "Important Notice" section at the back of the brochure for more information.

5.3 TWO BEDROOM ROOF TERRACE



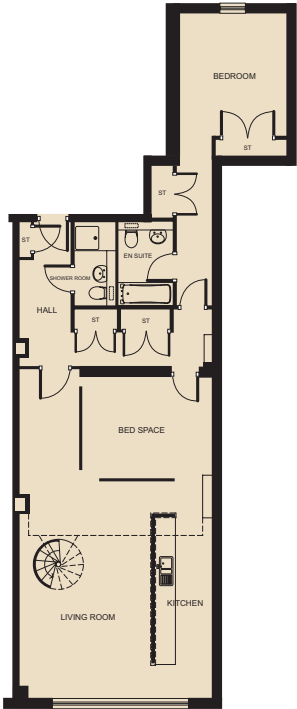
LIVING ROOM	5891	x	5282	19'4"	x	17'4"
KITCHEN	4103	x	2370	13'6"	x	7'9"
UTILITY	2200	x	1533	7'3"	x	5'0"
BED 1	5222	x	5432	17'10"	x	17'2"
ENSUITE	2465	x	1400	8'1"	x	4'7"
BED SPACE 2	4408	x	4132	13'7"	x	11'11"
BATH	2200	x	2200	7'3"	x	7'3"
HALL	6257	x	2520	20'7"	x	8'3"

5.4 ONE BEDROOM ROOF TERRACE



LIVING ROOM	3719	x	6393	21'0"	x	12'3"
KITCHEN	6393	x	2065	12'8"	x	7'9"
BED 1	4334	x	3726	14'3"	x	12'3"
UTILITY	1986	x	1326	6'6"	x	4'4"
BATH	4555	x	2970	14'11"	x	10'9"
HALL	4555	x	1850	14'11"	x	6'1"

5.5 TWO BEDROOM ROOF TERRACE



LIVING ROOM	6704	x	4135	22'0"	x	13'7"
KITCHEN	3760	x	3160	13'6"	x	7'9"
BED 1	3168	x	2970	17'10"	x	17'2"
ENSUITE	2380	x	1720	7'10"	x	5'8"
BED SPACE 2	4079	x	3150	13'5"	x	10'4"
SHOWER	2535	x	1030	8'4"	x	5'5"
HALL	4550	x	1557	14'1"	x	5'1"