



Elegance Reborn

PHASE TWO

LILYBANK
TERRACE

Studios, one, two and three bed apartments are now available, with contemporary, high quality specification and modern lift access to all floors behind classical dormers, bays and slate roofs.

30 NEW APARTMENTS

THE ELEGANT VICTORIAN FACADE SO CAREFULLY CONSIDERED IN 1883, HAS BEEN RETAINED AND OUR RENOWNED SCOTTISH STONEMASONS HAVE BEGUN THE PROCESS OF RESTORATION. BEHIND THIS OUR ARCHITECTS HAVE CREATED THIRTY CONTEMPORARY APARTMENTS WHICH ARE NOW AVAILABLE FOR RESERVATION.

PHASE

2



Lilybank Terrace Garden Area

FRONT ELEVATION



Some bedrooms are mezzanine gallery bedrooms. Please check plans for details.

Directory

0/1	2 Bed Apartment	page 6
0/2	1 Bed Apartment	page 7
0/3	3 Bed Apartment	page 8
0/7	2 Bed Apartment	page 12
0/8	1 Bed Apartment	page 13
0/9	1 Bed Apartment	page 14
1/2	2 Bed Apartment	page 16
1/3	1 Bed Apartment	page 17
1/4	1 Bed Apartment	page 18
1/5	2 Bed Apartment	page 19
1/6	1 Bed Apartment	page 20
1/7	2 Bed Apartment	page 21
2/2	2 Bed Apartment	page 25
2/3	1 Bed Apartment	page 26
2/4	1 Bed Apartment	page 27
2/5	2 Bed Apartment	page 28
2/6	1 Bed Apartment	page 29
2/7	2 Bed Apartment	page 30

REAR ELEVATION



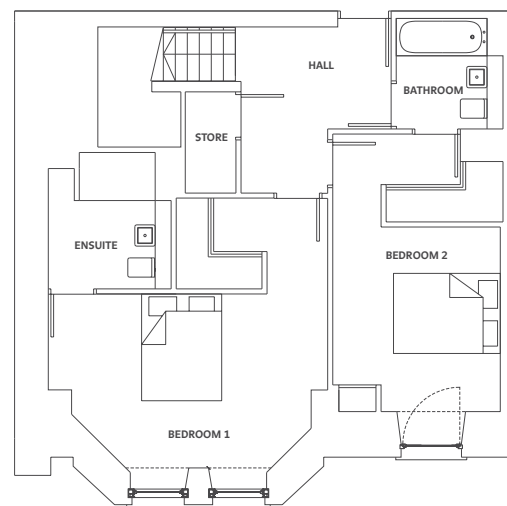
Some bedrooms are mezzanine gallery bedrooms. Please check plans for details.

Directory

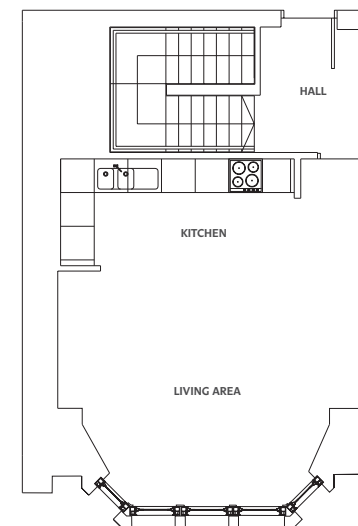
0/4	3 Bed Apartment	page 9
0/5	3 Bed Apartment	page 10
0/6	2 Bed Apartment	page 11
1/1	2 Bed Apartment	page 15
1/8	3 Bed Apartment	page 22
1/9	3 Bed Apartment	page 23
2/1	1 Bed Apartment	page 24
2/8	2 Bed Apartment	page 31
2/9	2 Bed Apartment	page 32
3/1	1 Bed Apartment	page 33
3/2	1 Bed Apartment	page 34
3/3	2 Bed Apartment	page 35

APT. 0/1

Living Room/Kitchen	18'1" x 20'4"	5.5 m x 6.2 m
Bedroom 1	17'1" x 10'10"	5.2 m x 3.3 m
Bedroom 2	10'2" x 11'6"	3.1 m x 3.5 m
En-suite	7'7" x 8'6"	2.3 m x 2.6 m
Bathroom	4'7" x 5'7"	1.4 m x 1.7 m



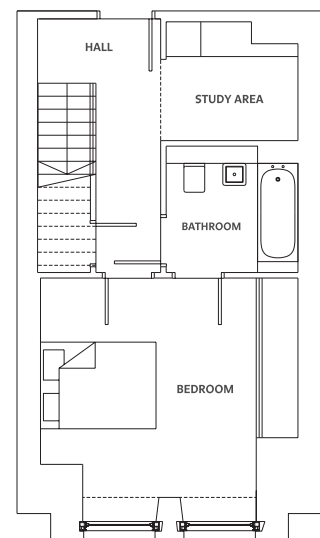
LOWER GROUND FLOOR



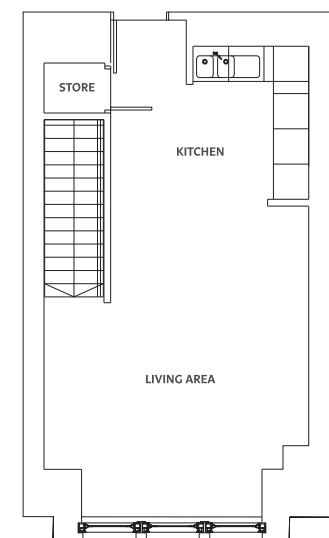
UPPER GROUND FLOOR

APT. 0/2

Living Room/Kitchen	14'9" x 26'7"	4.5 m x 8.1 m
Bedroom	12'2" x 12'6"	3.7 m x 3.8 m
Study Area	7'10" x 6'10"	2.4 m x 2.1 m
Bathroom	4'7" x 5'3"	1.4 m x 1.6 m



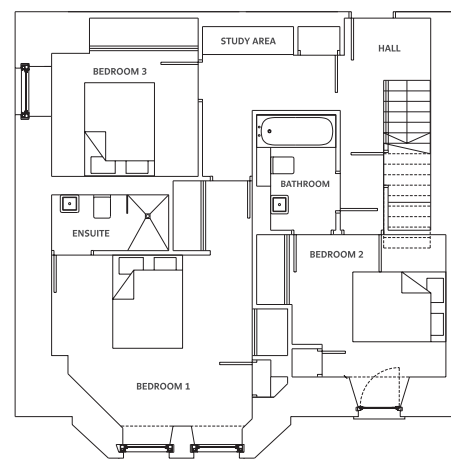
LOWER GROUND FLOOR



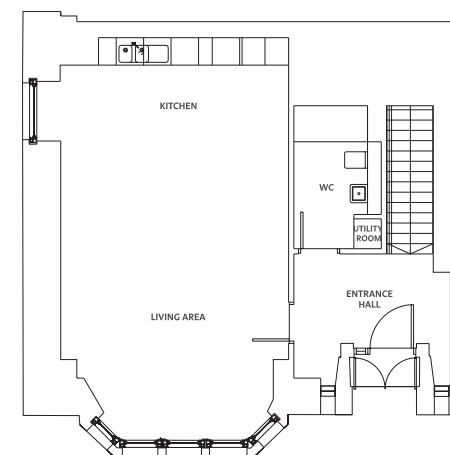
UPPER GROUND FLOOR

APT. 0/3

Living Room/Kitchen	16'5" x 28'10"	5.0 m x 8.8 m
Bedroom 1	14'1" x 12'1"	4.3 m x 3.7 m
Bedroom 2	10'9" x 10'2"	3.3 m x 3.1 m
Bedroom 3	10'2" x 8'10"	3.1 m x 2.7 m
En-suite	8'2" x 3'11"	2.5 m x 1.2 m
Bathroom	5'7" x 8'2"	1.7 m x 2.5 m
WC	6'2" x 10'2"	1.9 m x 3.1 m



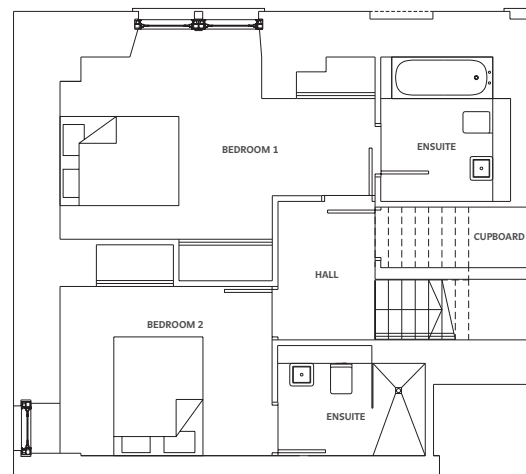
LOWER GROUND FLOOR



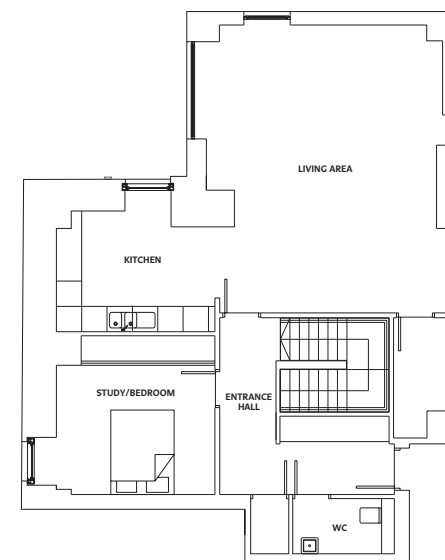
UPPER GROUND FLOOR

APT. 0/4

Living Room	17'9" x 22'4"	5.4 m x 6.8 m
Kitchen	13'1" x 9'6"	4.0 m x 2.9 m
Bedroom 1	17'5" x 10'2"	5.3 m x 3.1 m
Bedroom 2	11'9" x 9'2"	3.6 m x 2.8 m
Bedroom 3/Study	12'6" x 10'2"	3.8 m x 3.1 m
En-suite 1	7'2" x 6'7"	2.2 m x 2.0 m
En-suite 2	8'2" x 6'3"	2.5 m x 1.9 m
WC	7'10" x 4'3"	2.4 m x 1.3 m



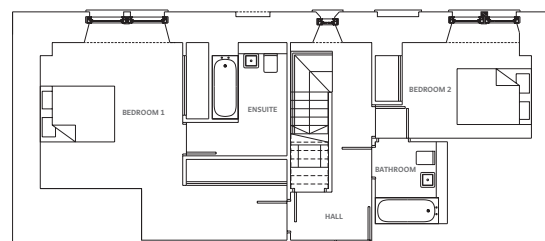
LOWER GROUND FLOOR



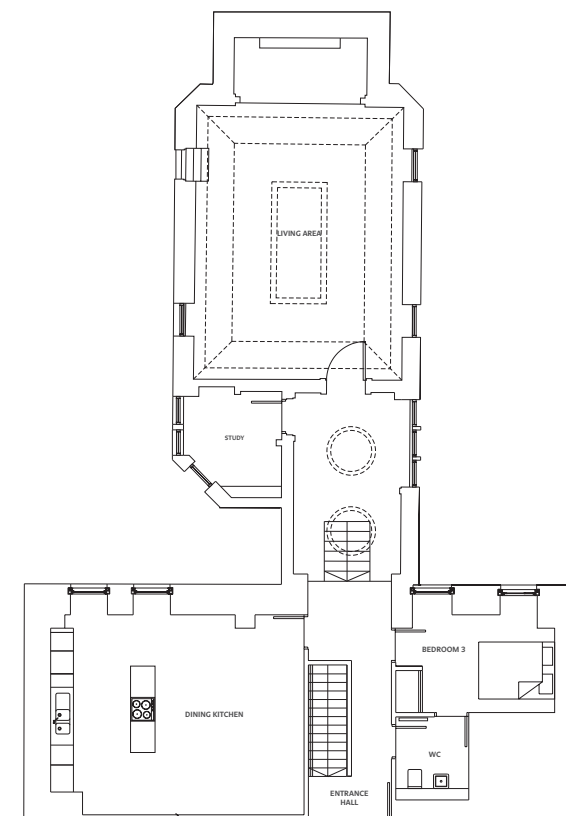
UPPER GROUND FLOOR

APT. 0/5

Living Room	29'6" x 18'	9.0 m x 5.5 m
Dining Kitchen	22' x 17'5"	6.7 m x 5.3 m
Bedroom 1	12'6" x 12'9"	3.8 m x 3.9 m
Bedroom 2	11'6" x 8'6"	3.5 m x 2.6 m
Bedroom 3	11'6" x 10'2"	3.5 m x 3.1 m
En-suite 1	6'7" x 9'8"	2.0 m x 3.0 m
En-suite 2	6'3" x 7'2"	1.9 m x 2.2 m
Study	9'2" x 8'6"	2.8 m x 2.6 m
WC	6'3" x 7'3"	1.9 m x 2.2 m



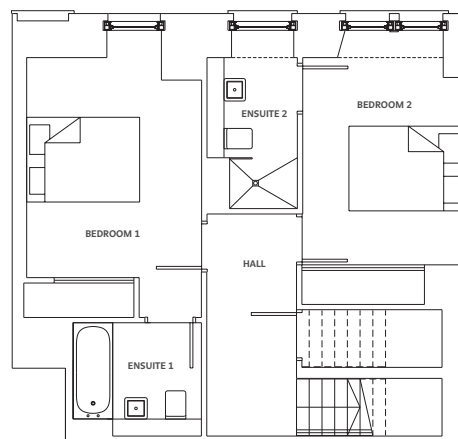
LOWER GROUND FLOOR



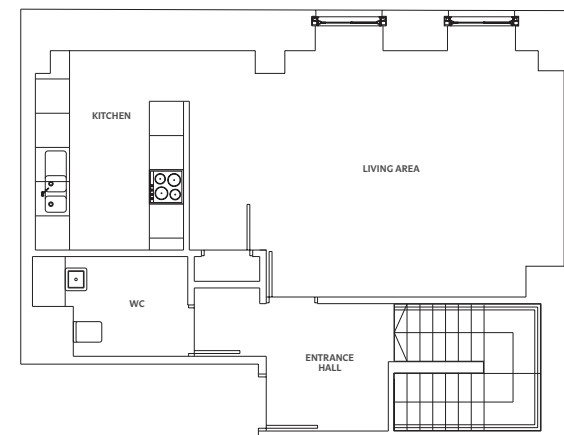
UPPER GROUND FLOOR

APT. 0/6

Living Room	21'8" x 14'1"	6.6 m x 4.3 m
Kitchen	8'6" x 11'6"	2.6 m x 3.5 m
Bedroom 1	10'2" x 12'9"	3.1 m x 3.9 m
Bedroom 2	9'2" x 12'1"	2.8 m x 3.7 m
En-suite 1	7'2" x 6'8"	2.2 m x 2.1 m
En-suite 2	5'2" x 8'9"	1.6 m x 2.7 m
WC	6'6" x 5'10"	2.0 m x 1.8 m



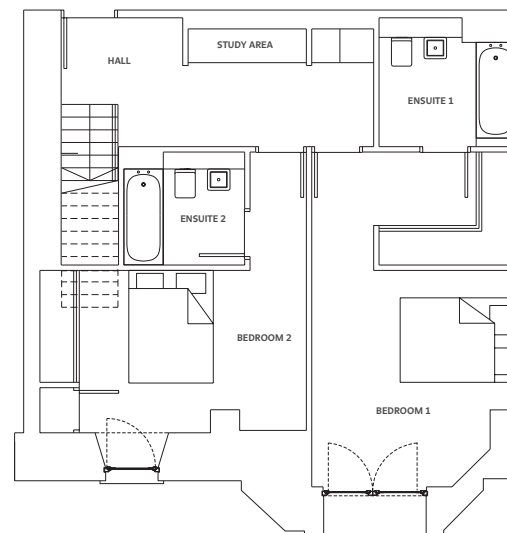
LOWER GROUND FLOOR



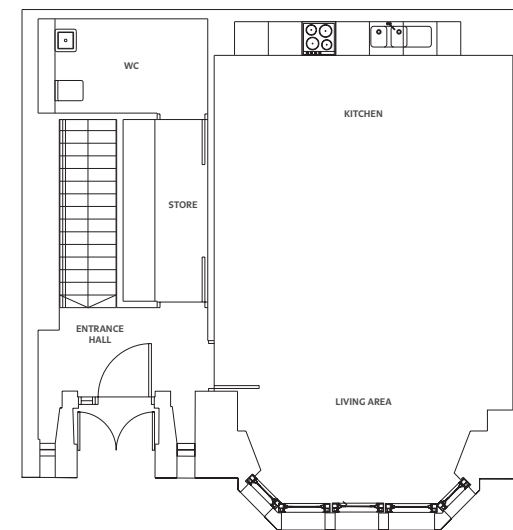
UPPER GROUND FLOOR

APT. 0/7

Living Room/Kitchen	17'4" x 28'3"	5.3 m x 8.6 m
Bedroom 1	11'6" x 19'4"	3.5 m x 5.9 m
Bedroom 2	17'5" x 13'1"	5.3 m x 4.0 m
En-Suite 1	7'10" x 7'7"	2.4 m x 2.3 m
En-suite 2	6'10" x 6'7"	2.1 m x 2.0 m
WC	9'10" x 5'7"	3.0 m x 1.7 m
Store	4'11" x 10'6"	1.5 m x 3.2 m



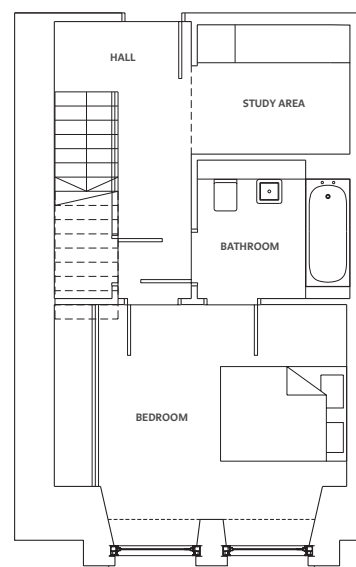
LOWER GROUND FLOOR



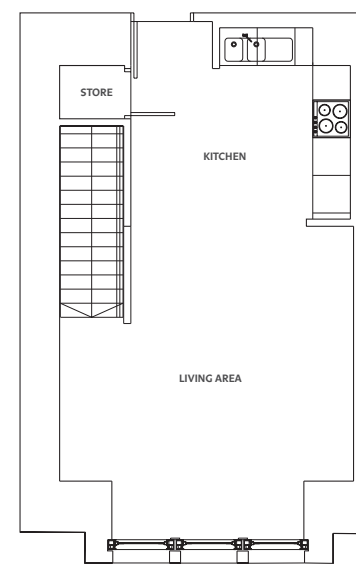
UPPER GROUND FLOOR

APT. 0/8

Living Room/ Kitchen 15'5" x 26'11"	4.7 m x 8.2 m
Bedroom 12'9" x 11'2"	3.9 m x 3.4 m
Study Area 8'2" x 6'11"	2.5 m x 2.1 m
Bathroom 7'10" x 7'3"	2.4 m x 2.2 m



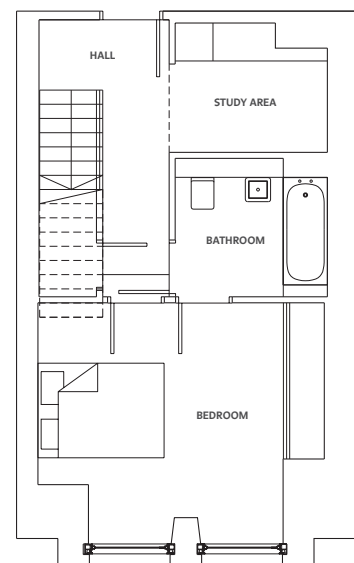
LOWER GROUND FLOOR



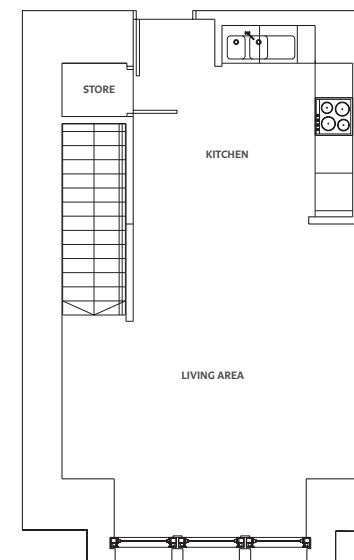
UPPER GROUND FLOOR

APT. 0/9

Living Room/Kitchen	15'9" x 25'7"	4.8 m x 7.8 m
Study Area	8'2" x 6'10"	2.5 m x 2.1 m
Bedroom	12'9" x 12'5"	3.9 m x 3.8 m
Bathroom	7'10" x 7'3"	2.4 m x 2.2 m



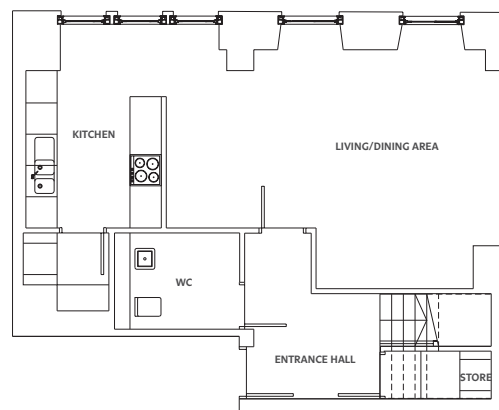
LOWER GROUND FLOOR



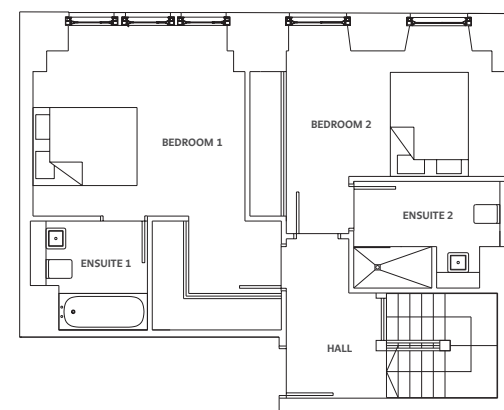
UPPER GROUND FLOOR

APT. 1/1

Living/Dining	15'1" x 21'3"	4.6 m x 6.5 m
Kitchen	8'6" x 12'10"	2.6 m x 3.9 m
Bedroom 1	13'5" x 12'1"	4.1 m x 3.7 m
Bedroom 2	14'5" x 7'10"	4.4 m x 2.4 m
En-suite 1.....	7'7" x 6'11"	2.3 m x 2.1 m
En-suite 2	10'2" x 6'11"	3.1 m x 2.1 m
WC	7'10" x 5'11"	2.4 m x 1.8 m



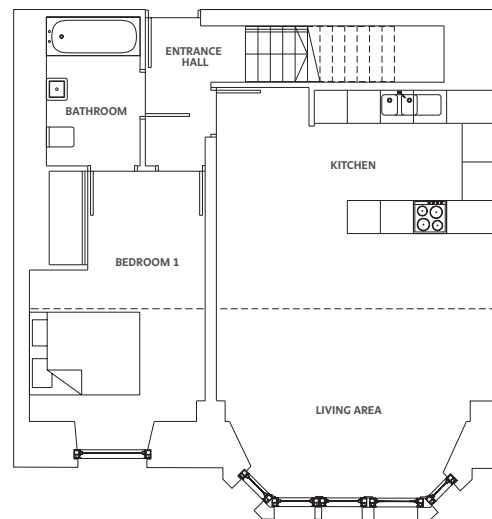
LOWER FIRST FLOOR



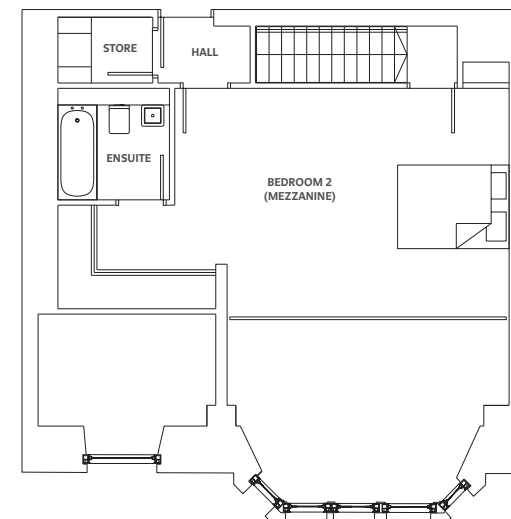
UPPER FIRST FLOOR

APT. 1/2

Living Room	16'9" x 15'9"	5.1 m x 4.8 m
Kitchen	16'9" x 8'6"	5.1 m x 2.6 m
Bedroom 1	14'9" x 10'6"	4.5 m x 3.2 m
Bedroom 2	19'4" x 13'1"	5.9 m x 4.0 m
En-suite	6'7" x 6'7"	2.0 m x 2.0 m
Bathroom	5'7" x 8'10"	1.7 m x 2.7 m



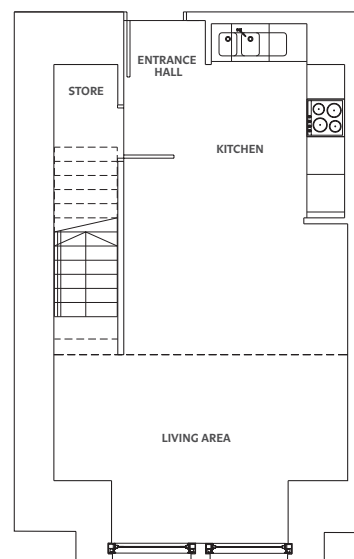
LOWER FIRST FLOOR



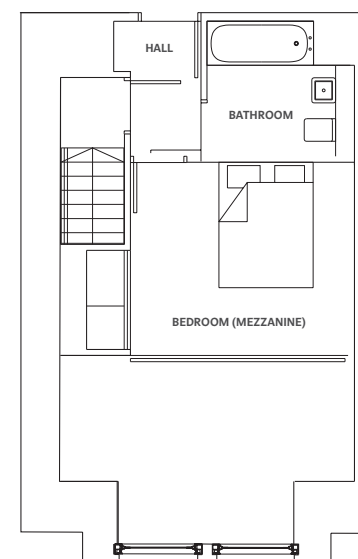
UPPER FIRST FLOOR

APT. 1/3

Living Room/Kitchen	15'5" x 27'3"	4.7 m x 8.3 m
Bedroom	11'10" x 10'2"	3.6 m x 3.1 m
Bathroom	7'10" x 7'3"	2.4 m x 2.2 m



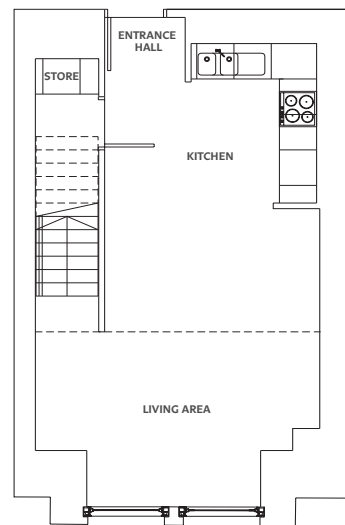
LOWER FIRST FLOOR



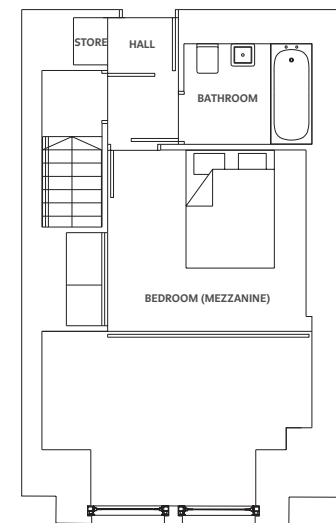
UPPER FIRST FLOOR

APT. 1/4

Living Room/Kitchen	27'2" x 15'1"	8.3 m x 4.6 m
Bedroom	11'2" x 10'2"	3.4 m x 3.1 m
Bathroom	7'3" x 5'7"	2.2 m x 1.7 m



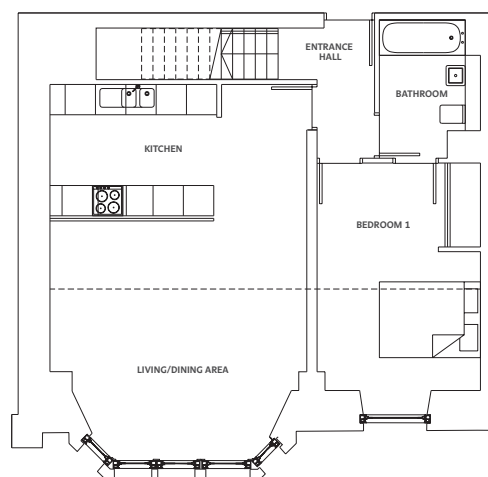
LOWER FIRST FLOOR



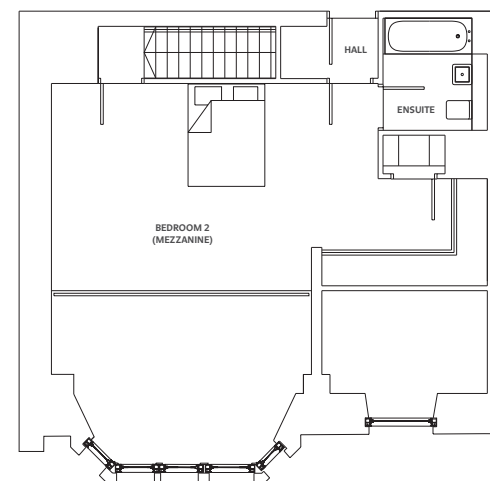
UPPER FIRST FLOOR

APT. 1/5

Living Room	16'9" x 15'9"	5.1 m x 4.8 m
Kitchen	16'9" x 8'6"	5.1 m x 2.6 m
Bedroom 1	10'6" x 14'9"	3.2 m x 4.5 m
Bedroom 2	16'8" x 13'1"	5.1 m x 4.0 m
En-suite	6'7" x 7'2"	2.0 m x 2.2 m
Bathroom	6'7" x 8'10"	2.0 m x 2.7 m



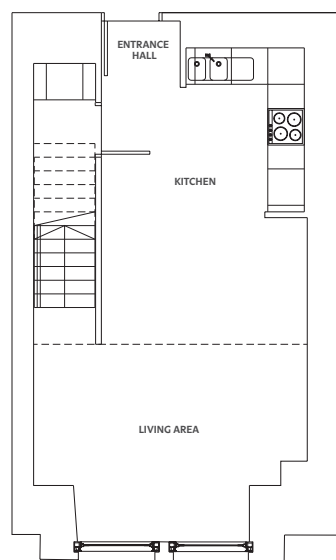
LOWER FIRST FLOOR



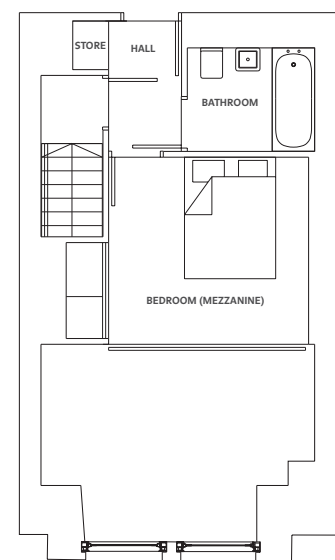
UPPER FIRST FLOOR

APT. 1/6

Living Room/Kitchen	14'9" x 26'7"	4.5 m x 8.1 m
Bedroom	10'9" x 10'2"	3.3 m x 3.1 m
Bathroom	6'10" x 5'7"	2.1 m x 1.7 m



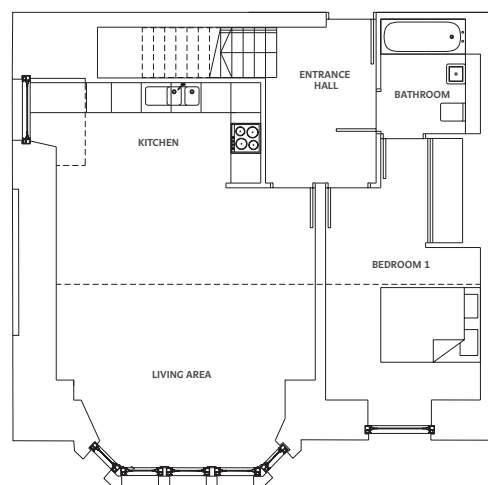
LOWER FIRST FLOOR



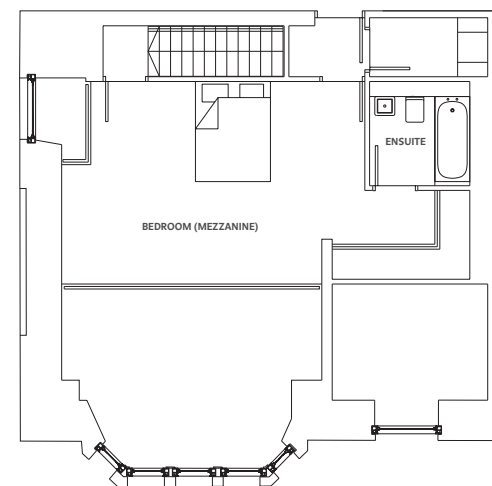
UPPER FIRST FLOOR

APT. 1/7

Living Room/Kitchen	17'1" x 25'3"	5.2 m x 7.7 m
Bedroom 1	10'2" x 14'1"	3.1 m x 4.3 m
Bedroom 2	19'8" x 13'1"	6.0 m x 4.0 m
En-suite	6'7" x 6'11"	2.0 m x 2.1 m
Bathroom	6'7" x 7'7"	2.0 m x 2.3 m



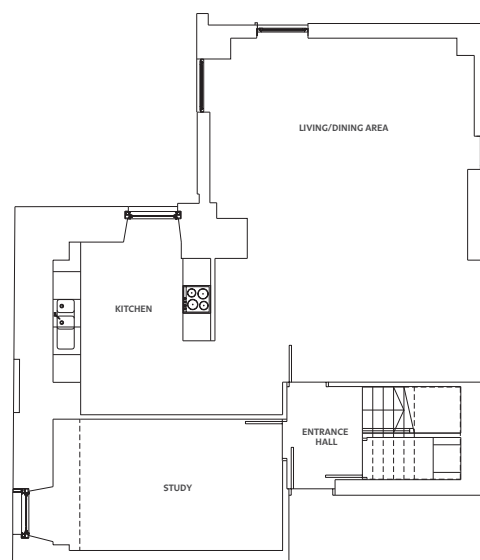
LOWER FIRST FLOOR



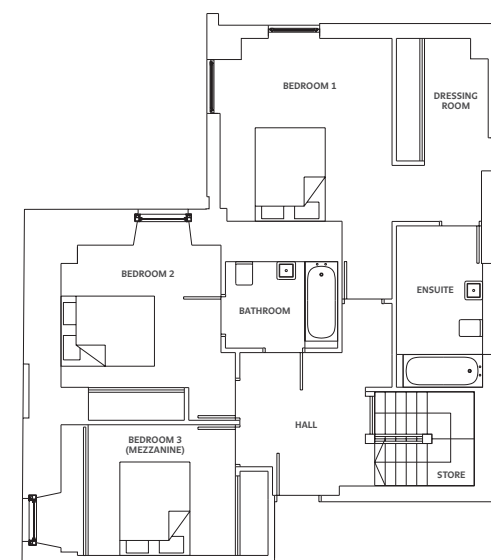
UPPER FIRST FLOOR

APT. 1/8

Living/Dining Room	18'8" x 24'3"	5.7 m x 7.4 m
Kitchen	11'2" x 12'2"	3.4 m x 3.7 m
Bedroom 1	12'2" x 12'10"	3.7 m x 3.9 m
Bedroom 2	11'2" x 11'10"	3.4 m x 3.6 m
Bedroom 3	10'6" x 9'2"	3.2 m x 2.8 m
Study	16'1" x 9'2"	4.9 m x 2.8 m
En-suite	6'10" x 11'6"	2.1 m x 3.5 m
Bathroom	7'10" x 6'2"	2.4 m x 1.9 m
Dressing Room	4'7" x 12'10"	1.4 m x 3.9 m



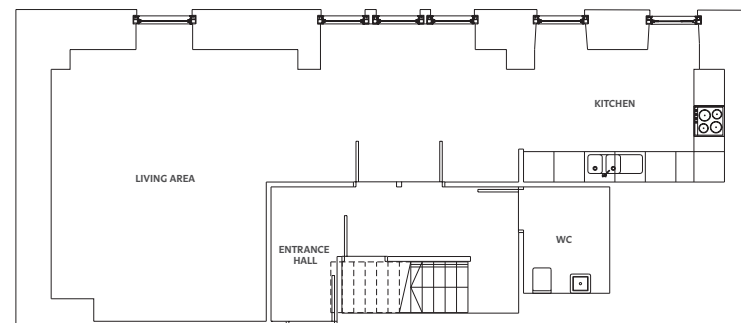
LOWER FIRST FLOOR



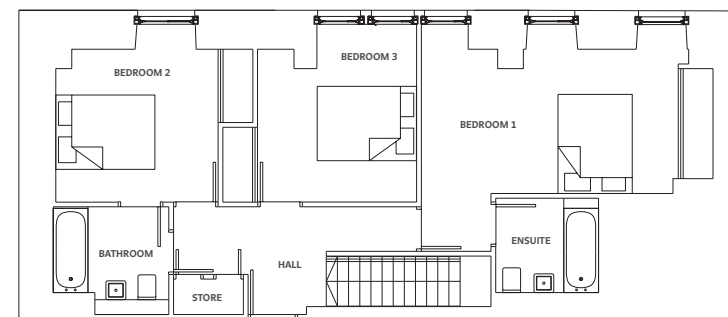
UPPER FIRST FLOOR

APT. 1/9

Living Room/Dining	30'2" x 17'4"	9.2 m x 5.3 m
Kitchen	12'10" x 8'6"	3.9 m x 2.6 m
Bedroom 1.....	17'1" x 9'6"	5.2 m x 2.9 m
Bedroom 2	10'10" x 9'10"	3.3 m x 3.0 m
Bedroom 3	10'6" x 11'10"	3.2 m x 3.6 m
Bathroom.....	7'7" x 7'3"	2.3 m x 2.2 m
En-suite.....	6'10" x 6'3"	2.1 m x 1.9 m
WC	5'7" x 6'11"	1.7 m x 2.1 m



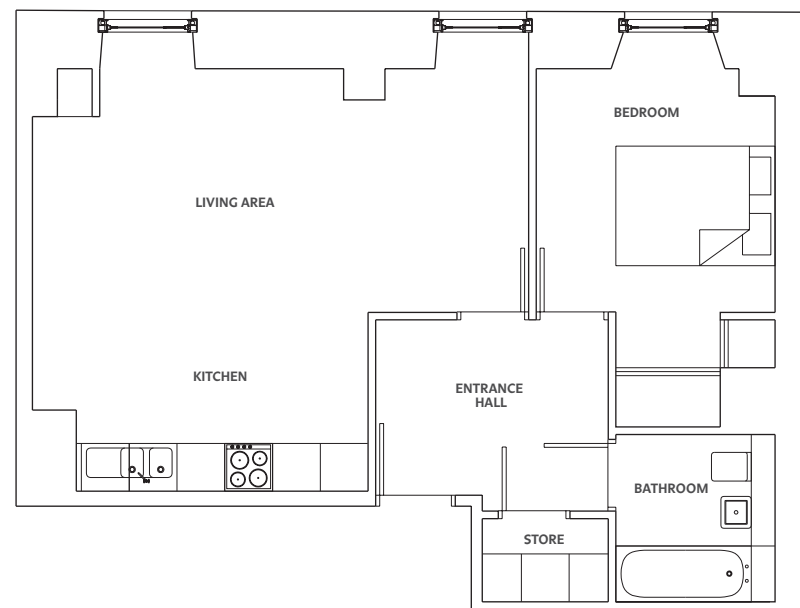
LOWER FIRST FLOOR



UPPER FIRST FLOOR

APT. 2/1

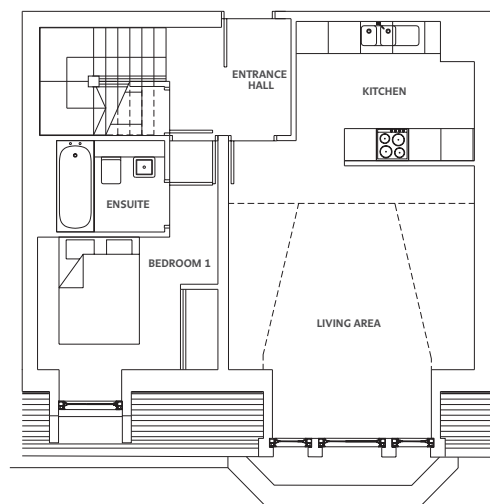
Living Room/ Kitchen	20'4" x 17'5"	6.2 m x 5.3 m
Bedroom	9'11" x 13'9"	3.0 m x 4.2 m
Bathroom	6'7" x 6'11"	2.0 m x 2.1 m



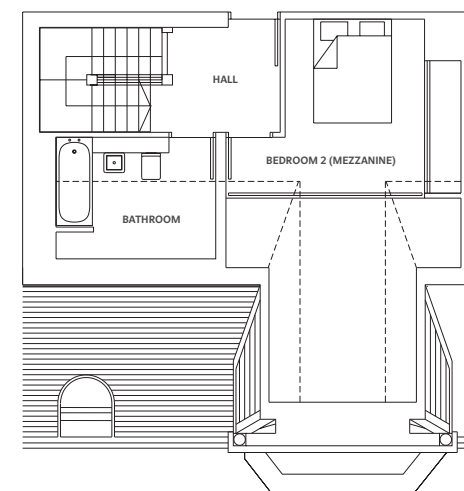
SECOND FLOOR

APT. 2/2

Living Room.....	15'1" x 17'1"	4.6 m x 5.2 m
Kitchen.....	10'10" x 8'6"	3.3 m x 2.6 m
Bedroom 1	11'2" x 8'2"	3.4 m x 2.5 m
Bedroom 2	8'10" x 10'9"	2.7 m x 3.3 m
En-suite	6'7" x 5'6"	2.0 m x 1.7 m
Bathroom.....	10'2" x 7'7"	3.1 m x 2.3 m



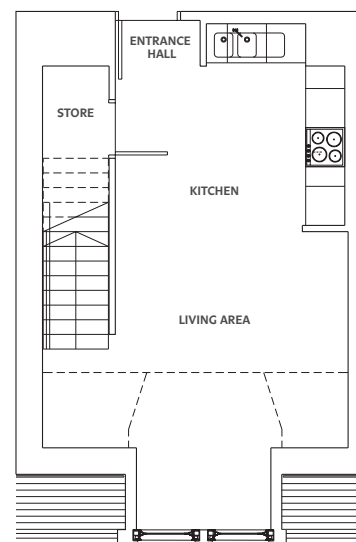
SECOND FLOOR



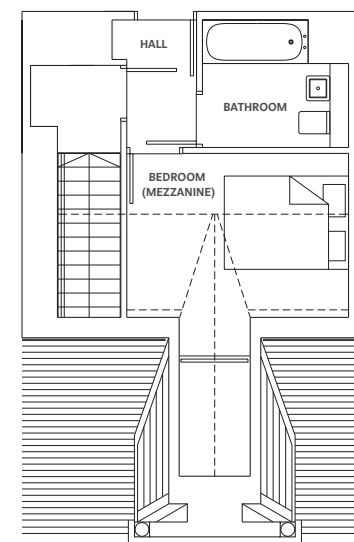
THIRD FLOOR

APT. 2/3

Living Room/Kitchen	15'5" x 24'11"	4.7 m x 7.6 m
Bedroom	11'5" x 8'6"	3.5 m x 2.6 m
Bathroom	7'10" x 4'7"	2.4 m x 1.4 m



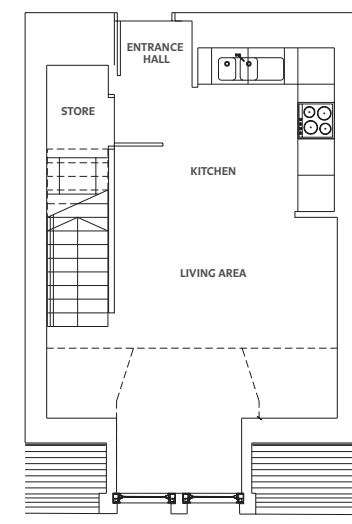
SECOND FLOOR



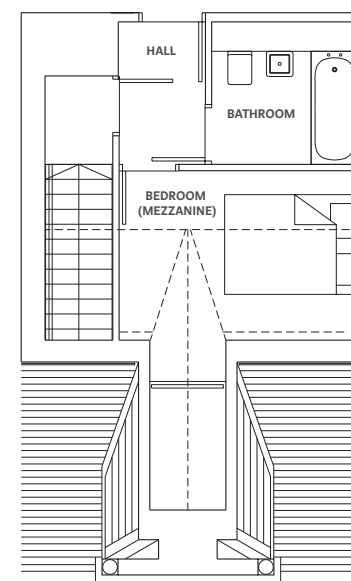
THIRD FLOOR

APT. 2/4

Living Room/Kitchen	23'11" x 15'9"	7.3 m x 4.8 m
Bedroom.....	11'9" x 8'2"	3.6 m x 2.5 m
Bathroom.....	7'2" x 6'11"	2.2 m x 2.1 m



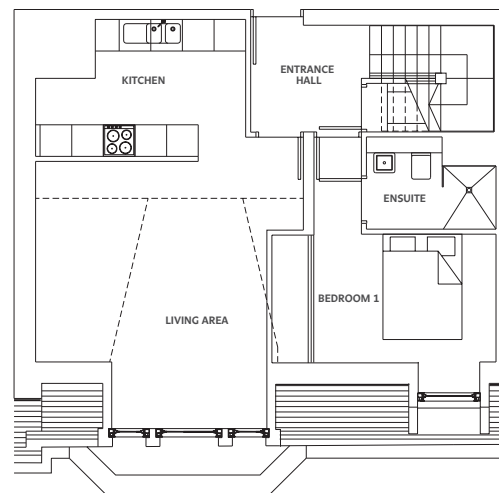
SECOND FLOOR



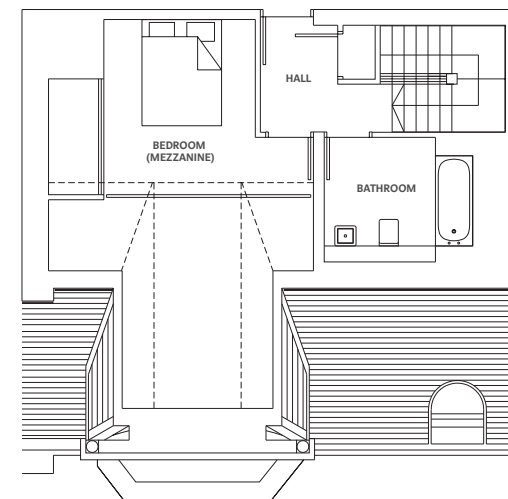
THIRD FLOOR

APT. 2/5

Living Room	16'9" x 16'9"	5.1 m x 5.1 m
Kitchen	13'1" x 8'6"	4.0 m x 2.6 m
Bedroom 1	11'6" x 7'10"	3.5 m x 2.4 m
Bedroom 2	9'6" x 10'10"	2.9 m x 3.3 m
En-suite	8'2" x 5'10"	2.5 m x 1.8 m
Bathroom	9'2" x 7'7"	2.8 m x 2.3 m



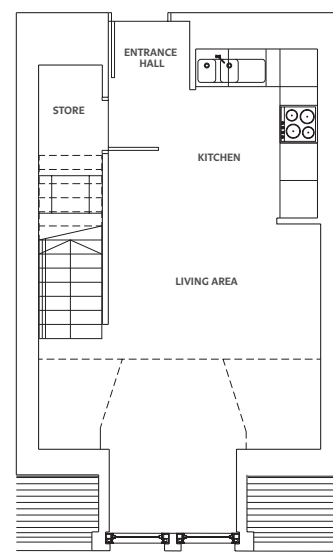
SECOND FLOOR



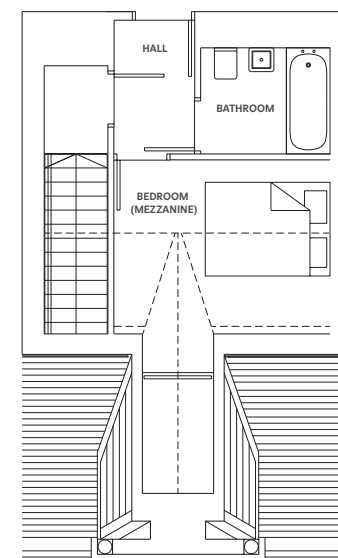
THIRD FLOOR

APT. 2/6

Living Room/Kitchen 14'9" x 25'7" 4.5 m x 7.8 m
Bedroom 11'6" x 9'2" 3.5 m x 2.8 m
Bathroom 6'11" x 5'7" 2.1 m x 1.7 m



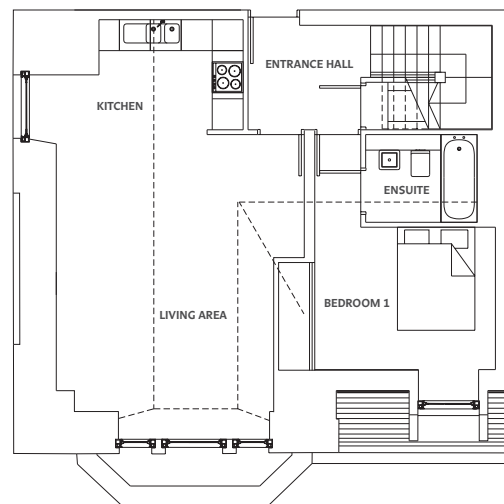
SECOND FLOOR



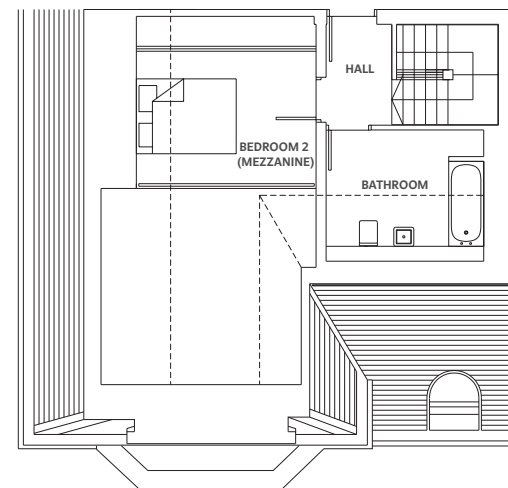
THIRD FLOOR

APT. 2/7

Living Room	15'9" x 19'4"	4.8 m x 5.9 m
Kitchen	9'2" x 6'11"	2.8 m x 2.1 m
Bedroom 1	11'6" x 9'2"	3.5 m x 2.8 m
Bedroom 2	8'2" x 11'1"	2.5 m x 3.4 m
En-suite	7'2" x 5'6"	2.2 m x 1.7 m
Bathroom	10'5" x 8'6"	3.2 m x 2.6 m



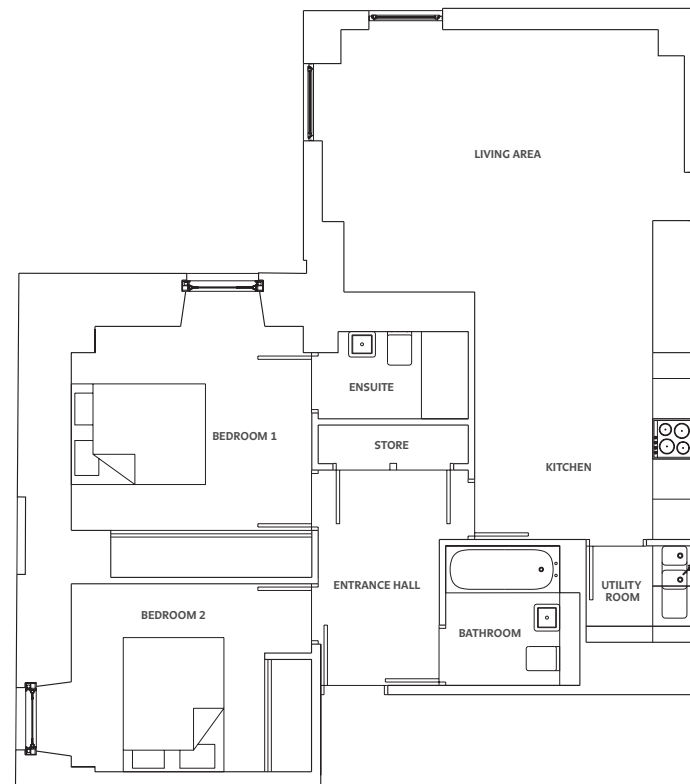
SECOND FLOOR



THIRD FLOOR

APT. 2/8

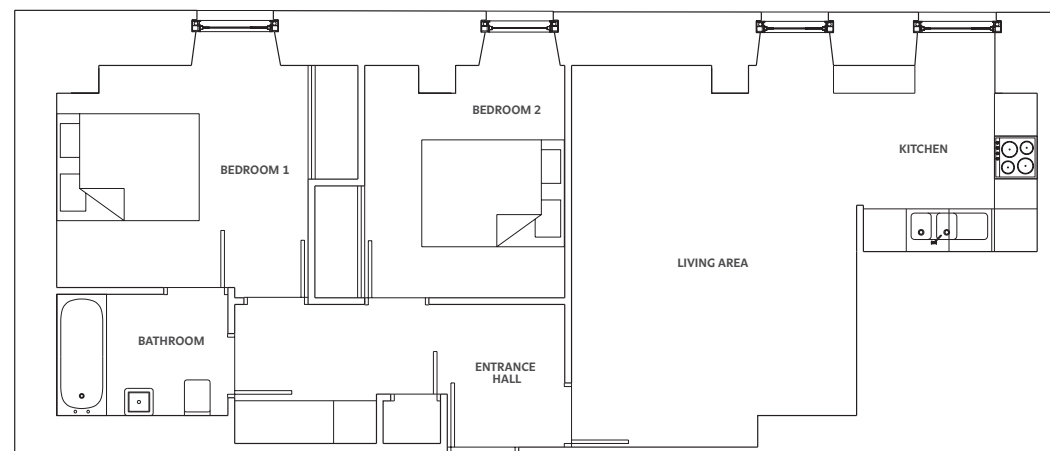
Living Room	17'9" x 15'9"	5.4 m x 4.8 m
Kitchen	8'10" x 9'2"	2.7 m x 2.8 m
Bedroom 1	11'9" x 9'10"	3.6 m x 3.0 m
Bedroom 2	9'6" x 9'2"	2.9 m x 2.8 m
En-suite	7'2" x 4'3"	2.2 m x 1.3 m
Bathroom	6'7" x 6'11"	2.0 m x 2.1 m
Utility Room	5'3" x 4'7"	1.6 m x 1.4 m



SECOND FLOOR

APT. 2/9

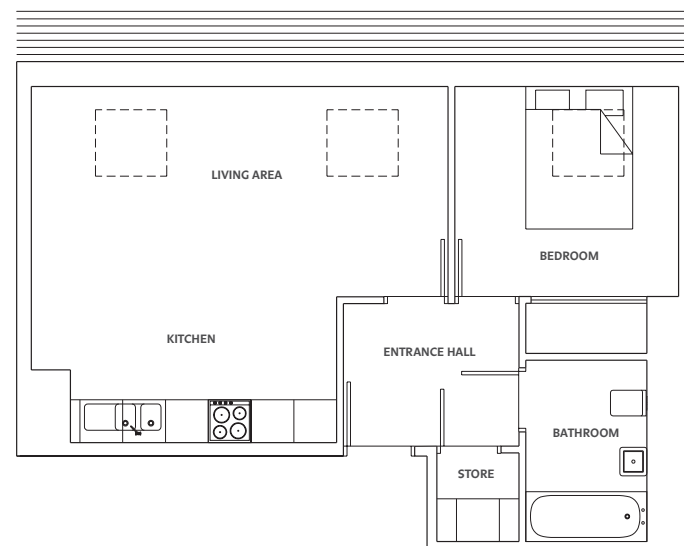
Living Room	13'1" x 17'9"	4.0 m x 5.4 m
Kitchen	8'2" x 8'6"	2.5 m x 2.6 m
Bedroom 1	11'6" x 10'2"	3.5 m x 3.1 m
Bedroom 2	9'2" x 10'10"	2.8 m x 3.3 m
Bathroom	7'11" x 5'7"	2.4 m x 1.7 m



SECOND FLOOR

APT. 3/1

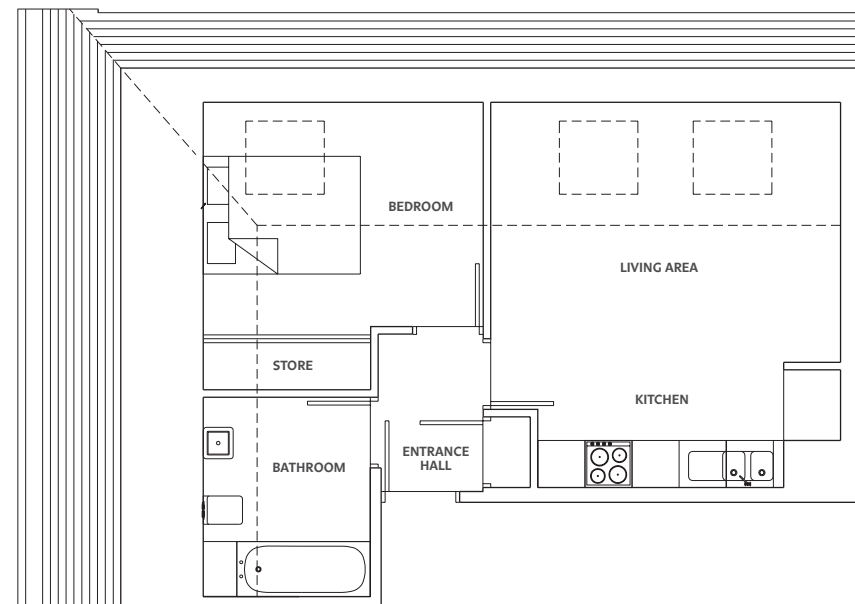
Living Room/ Kitchen	19' x 16'5"	5.8 m x 5.0 m
Bedroom	10'2" x 9'6"	3.1 m x 2.9 m
Bathroom	5'7" x 8'2"	1.7 m x 2.5 m



THIRD FLOOR

APT. 3/2

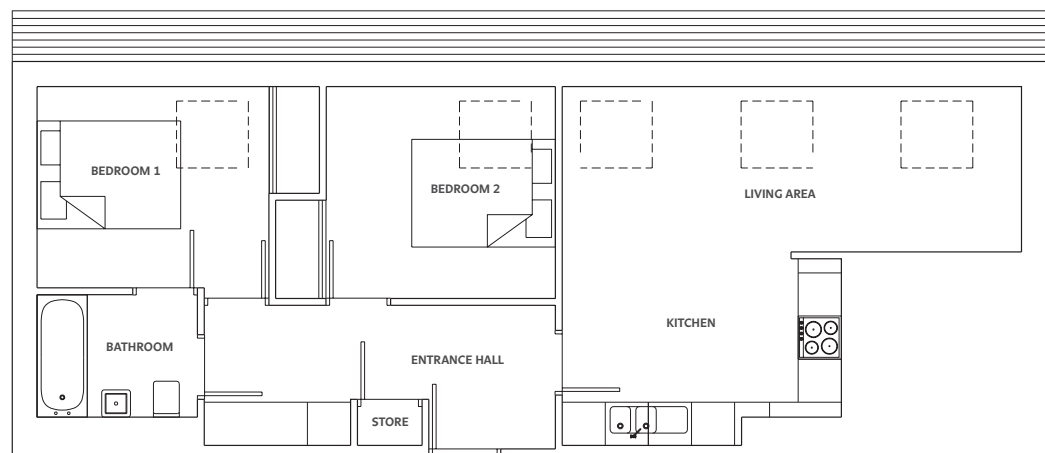
Living Room/Kitchen	14'9" x 14'1"	4.5 m x 4.3 m
Bedroom	11'9" x 9'6"	3.6 m x 2.9 m
Bathroom	6'11" x 8'10"	2.1 m x 2.7 m



THIRD FLOOR

APT. 3/3

Living Room/Kitchen	21' x 16'5"	6.4 m x 5.0 m
Bedroom 1	10'6" x 9'2"	3.2 m x 2.8 m
Bedroom 2	10'6" x 9'6"	3.2 m x 2.9 m
Bathroom	7'3" x 5'7"	2.2 m x 1.7 m



THIRD FLOOR

Luxury specification

FLOOR FINISHES

Hardwood flooring in all public areas including kitchens with tiling to all wet rooms. Warm, neutral wool carpeting for bedroom areas.

KITCHEN

Choice of exquisite contemporary kitchens designed by Kitchens International, incorporating stainless steel Siemens appliances and stunning Quartz worktops.

BATHROOMS

Modern contemporary suites by Porcelanosa with neutral tiling and underfloor heating.

HEATING

Gas fired combi boiler providing a modern efficient heating and hot water system to each property.

WINDOWS & DOORS

New double-glazed sash and case windows with traditional panelling around bay windows. Contemporary flush veneer doors with chrome ironmongery.

PARKING

Secure off street parking for selected apartments – please check the price list for confirmation of which apartments these are allocated to.

LIFT ACCESS

A new passenger lift will be available to all floors.

PORCELANOSA
TILES • BATHROOMS • KITCHENS



Kitchen Townhouse 4

*Spanish **porcelain** tiles complement the warm wooden floors. The apartments are finished throughout with the finest materials from across the world.*



*Bathrooms are beautifully finished in a refined, elegant style, incorporating **contemporary** suites by **Porcelanosa** with neutral tiling and underfloor heating.*



Bathroom Townhouse 4

Elegance Reborn

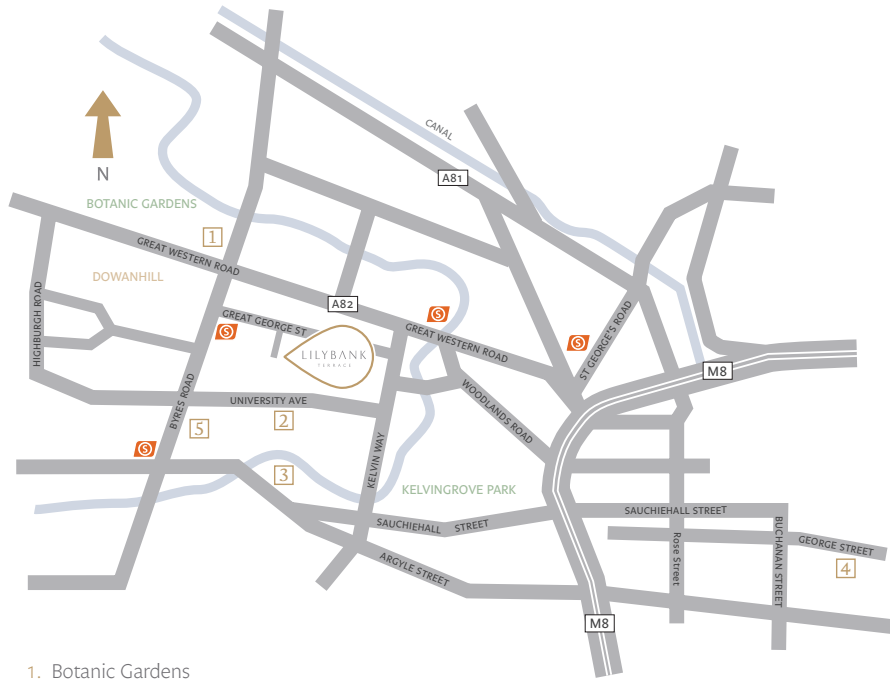


Townhouse 4



Rear View of Lilybank Terrace

Location of Lilybank Terrace G12 8RX



1. Botanic Gardens
2. Glasgow University
3. Kelvingrove Art Gallery
4. George Square
5. Western Infirmary

For more details and
further information
call us on 0141 222 5869

www.savills.co.uk



www.landshomes.co.uk



IMPORTANT NOTICE: Savills for themselves and the vendors or lessors of this property whose agents they are give notice that: (i) These particulars have been prepared in good faith to give a fair overall view of the development, do not form any part of an offer or contract to the purchaser or any third party, and must not be relied upon as statements or representations of fact. (ii) Purchasers must rely on their own enquiries by inspections or otherwise on all matters including planning or other consents. (iii) The information in these particulars is given without responsibility on the part of Savills or their clients.

Neither Savills nor any joint agents nor their employees have any authority to make or give any representations or warranties whatever in relation to this property. (iv) Any areas, measurements or distances referred to are given as a guide only and are not precise. Photographs are not necessarily comprehensive nor current; no assumptions should be made that any contents shown are included in the sale nor with regards to parts of the property which have not been photographed. (v) Savills or any joint agents have not tested any services or equipment and nothing in these particulars should be deemed to be a statement that they are in good working order nor that the property is in good structural condition.