

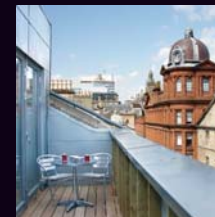
Virginia

Galleries

Merchant City | Glasgow

A boutique development of only 37
stylish 1 & 2 bedroom apartments set
in the newest, most vibrant quarter of
the Merchant City

Discover it... Live it... Love it...



Virginia Galleries

Merchant City · Glasgow

Times have Changed ...

Virginia Galleries is the area between Virginia Street and Miller Street. An area that once hosted the grand offices of Glasgow's tobacco merchants and the tobacco exchange. Virginia Court & Galleries now boast 37 exceptional apartments complimented with a fine array of shops and restaurants.

Discover it... Live it... Love it...



A Life Less Ordinary ...

Billed as being the city's very own Covent Garden, these apartments form part of a larger development spearheaded by Credential, which will transform the last remaining section of the Merchant's Trail into a vibrant shopping and leisure area.

Cafe Society...

Virginia Galleries...

will be set within a gated cobbled wynd, complete with courtyard, which will accommodate boutique shops, a small department store, restaurants & cafés. The development will also create a golden shopping triangle by linking the shopping areas around Princess Square and Candleriggs, as well as establishing a café society. Capturing the best of city centre living the majority of apartments feature an outdoor balcony, to enjoy the sun or watch the world go by.



Computer generated images of proposed development



Location ...

Nestled in a quiet street within the Merchant City the location is a stroll away from the transport hub of Queen Street and George Square for subways and trains to other parts of Glasgow or Scotland.

This area is the vibrant heart of Glasgow, sophisticated shops and boutiques blend with upmarket bars and restaurants to deliver a venue rich with entertainment offerings.

Glasgow's Merchant City...

City Centre Chic...

Living at Virginia Galleries will place you in the historic heart of the most cosmopolitan part of town where a world of entertainment, culture and relaxation awaits you. The Merchant City offers you all the good things that city life can bring, and best of all, it's just outside your doorstep.

A wealth of restaurants, cafes, pub, clubs, stylish shops and boutiques as well as exciting live music venues, stunning art galleries and theatres.

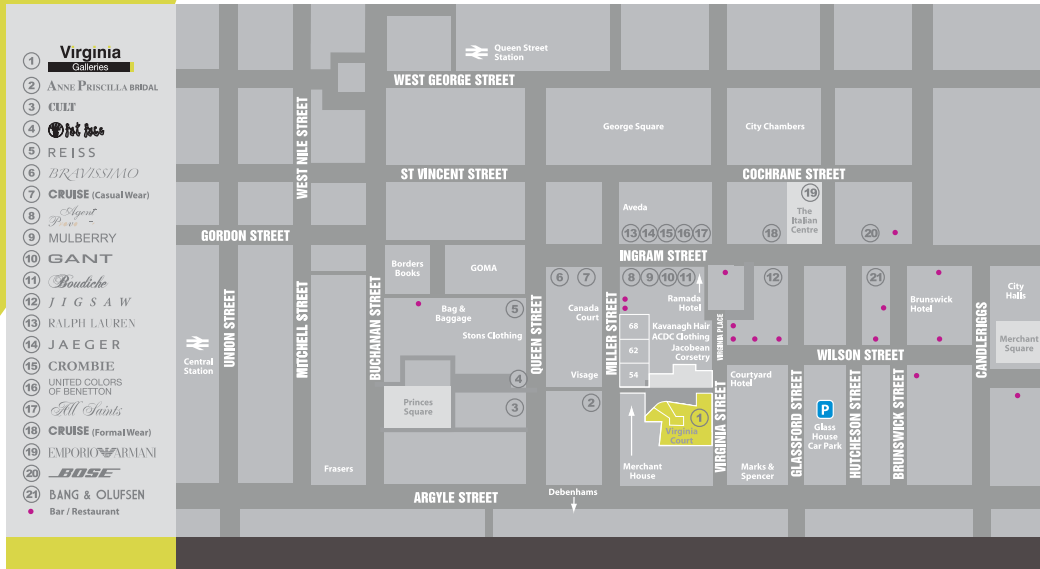


Discover it...

Live it...



Love it...



On Your Doorstep...

You can enjoy some retail therapy with some of the worlds leading designers - Armani, Ralph Lauren and Vivienne Westwood as well as the brightest lights on the high street including All Saints and Jigsaw. Then you can re-charge your batteries by eating and drinking in style in a cosmopolitan coffee shop or fine restaurant before heading out to enjoy the nightlife.

Virginia
Galleries

Merchant City | Glasgow



Specification...

- Secure access via video entry to tiled lobby and external walkways
- Passenger lift to all floors
- Timber double glazed windows
- Most properties benefit from full width glazing to the lounge leading to painted galvanised steel balconies or terraces with hardwood decking *
- Modern white sanitaryware and chrome taps with thermostatic showers in all bathrooms
- Contemporary tiling to walls and floors in wet rooms
- Stylish contemporary kitchens from Wrightons with complimentary glass splash backs
- Integrated fridge freezer, dishwasher and washer dryer #
- Oak veneer internal doors with satin ironmongery
- Carpets to bedrooms and laminate flooring to all public areas
- TV and Phone points to all bedrooms
- Lounge is wired for communal Satellite TV (subject to subscription)
- Gas Combi Boiler for efficient hot water and heating
- All properties benefit from a 10 year Premier Guarantee

* In applicable properties, please check plans

Utility rooms and laundry rooms have free standing washer dryer and in certain properties separate freezer. Please ask sales staff for more details on each property.

Specification subject to change; please check with sales staff at time of reservation.



Interiors...

Your new home enjoys stunning specification, stylish fixtures and fittings and has been thoughtfully designed to make the most of space, aspect and most importantly of all, natural light. Interiors are confident, contemporary and dynamic, with attention to detail evident in every corner of every room.

inspirational
interiors...





Please Note:
Internal images of apartment 3.2, other apartment styles may vary.

Virginia

Galleries

Merchant City | Glasgow

Take a Closer Look...



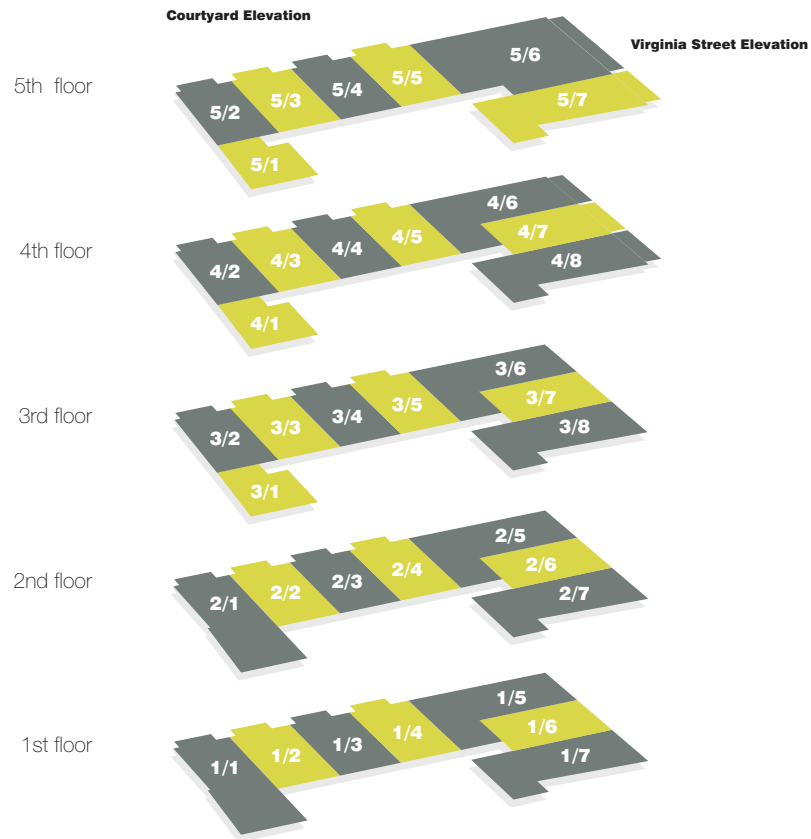
Virginia

Galleries

Merchant City | Glasgow

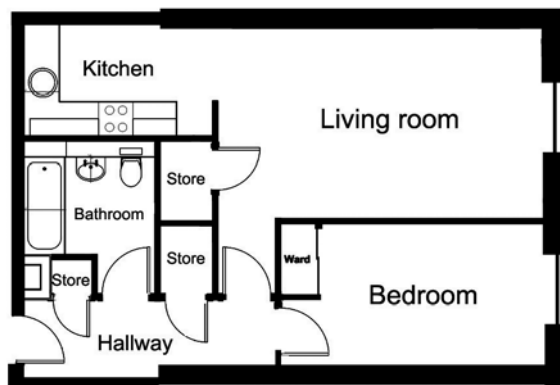
one bedroom apartments

Please Note: Dimensions are indicative of individual apartment types. Dimensions may vary between individual floorplans. Please check with sales negotiator for accurate dimensions.



Apartments: 1/2, 1/3, 1/4, 2/2, 2/3, 2/4, 3/3, 3/4, 3/5, 4/3, 4/4, 4/5, 5/3, 5/4, 5/5

Dimensions	Metres
Lounge:	4.9m x 4.7m
Kitchen:	inc.
Utility:	1.5m x 1.4m
Bedroom 1:	3.8m x 2.9m
Bathroom:	2.2m x 1.9m
Balcony:	3.3m x 1.2m



Apartments: 1/6, 2/6, 3/7

Dimensions	Metres
Lounge:	5.6m x 3.3m
Kitchen:	3.3m x 1.8m
Bedroom 1:	3.8m x 2.9m
Bathroom:	2.4m x 2.3m



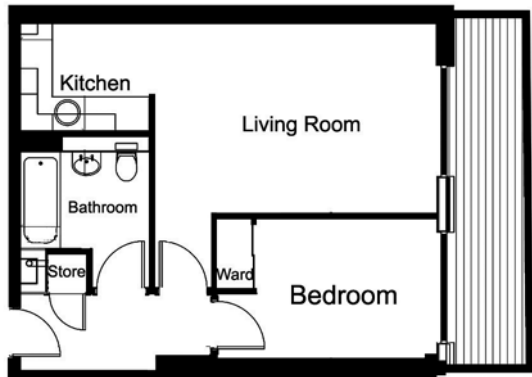
Apartments: 3/1, 4/1, 5/1

Dimensions	Metres
Lounge:	6.0m x 3.4m
Kitchen:	2.8m x 2.5m
Bedroom 1:	3.7m x 3.4m
Bathroom:	2.1m x 1.7m



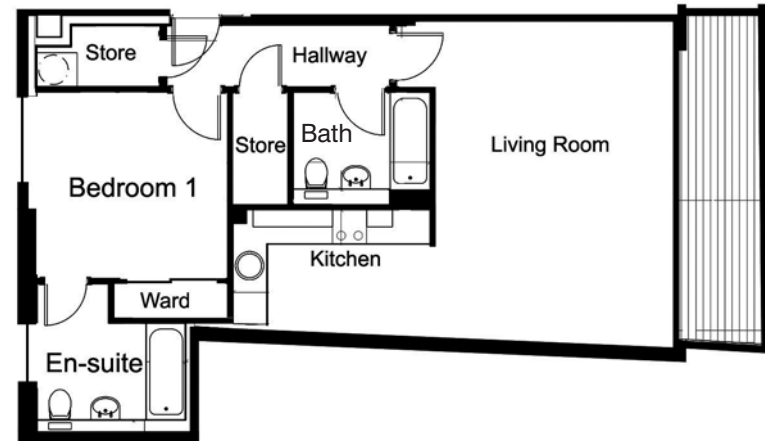
Apartments: 3/2, 4/2, 5/2

Dimensions	Metres
Lounge:	5.1m x 4.7m
Kitchen:	Inc
Bedroom 1:	3.8m x 3.0m
Bathroom:	2.2m x 1.9m
Balcony:	3.3m x 1.2m



Apartment: 4/7

Dimensions	Metres
Lounge:	5.0m x 3.3m
Kitchen:	2.3m x 1.9m
Bedroom 1:	3.2m x 2.5m
Bathroom:	2.3m x 2.7m
Terrace:	6.1m x 1.2m



Apartment: 4/8

Dimensions	Metres
Lounge:	5.5m x 4.1m
Kitchen:	3.5m x 2.0m
Bedroom 1:	3.4m x 3.4m
En-Suite:	2.6m x 2.4m
Bathroom:	2.4m x 1.7m
Terrace:	5.8m x 1.3m

one and two bedroom apartments

Please Note: Dimensions are indicative of individual apartment types. Dimensions may vary between individual floorplans. Please check with sales negotiator for accurate dimensions.

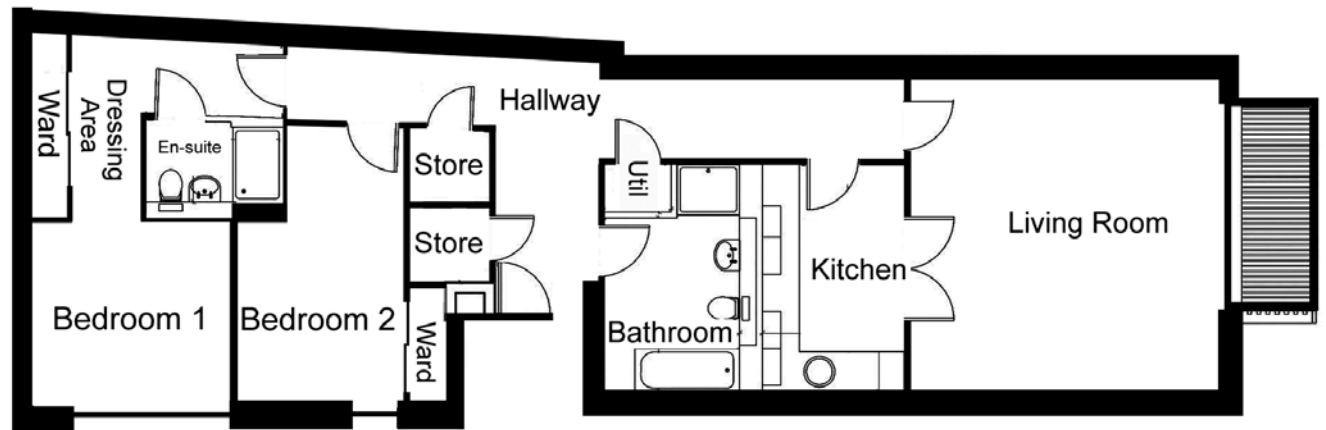


Apartment: 5/7

Dimensions	Metres
Lounge:	5.3m x 4.2m
Kitchen:	2.0m x 1.6m
Bedroom 1:	3.4m x 3.3m
En-Suite:	2.6m x 2.4m
Terrace:	5.7m x 1.3m

Apartments: 1/1, 2/1

Dimensions	Metres
Lounge:	5.1m x 5.0m
Kitchen:	3.7m x 2.3m
Bedroom 1:	3.3m x 3.0m
En-Suite:	2.2m x 1.3m
Dressing Area:	2.9m x 1.1m
Bedroom 2:	4.3m x 2.7m
Bathroom:	3.6m x 2.2m
Balcony:	3.3m x 1.2m



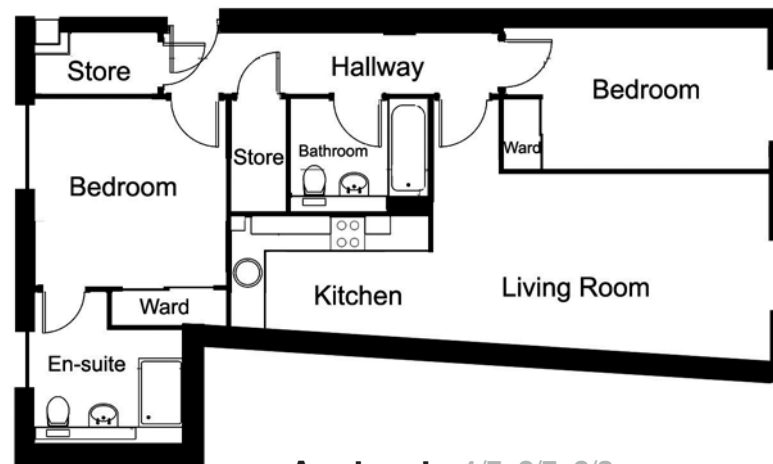
two bedroom apartments

Please Note: Dimensions are indicative of individual apartment types. Dimensions may vary between individual floorplans. Please check with sales negotiator for accurate dimensions.



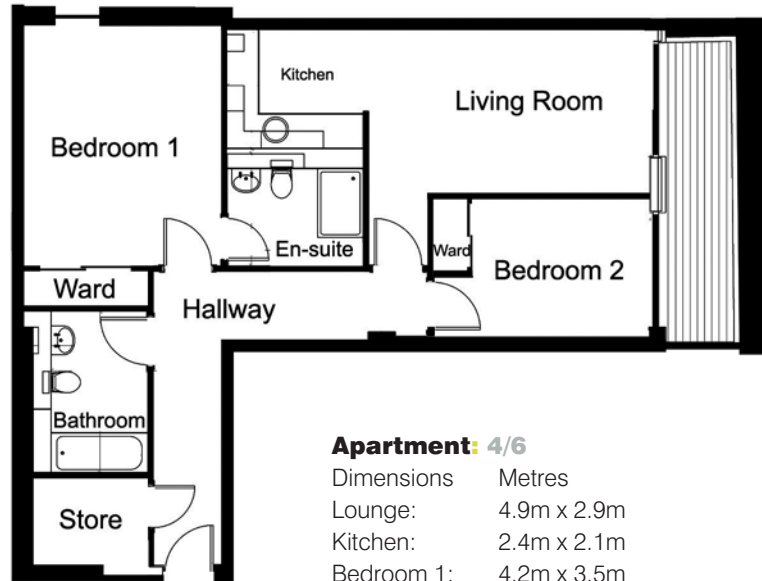
Apartments: 1/5, 2/5, 3/6

Dimensions	Metres
Lounge:	5.7m x 2.9m
Kitchen:	3.2m x 2.0m
Bedroom 1:	4.2m x 3.5m
En-Suite:	2.4m x 1.6m
Bedroom 2:	4.0m x 2.4m
Bathroom:	2.4m x 1.7m



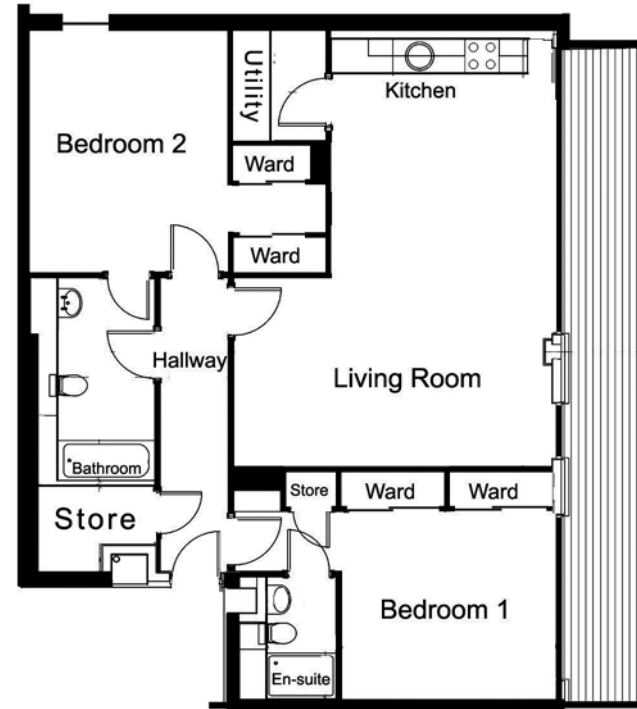
Apartments: 1/7, 2/7, 3/8

Dimensions	Metres
Lounge:	5.9m x 3.3m
Kitchen:	3.5m x 2.0m
Bedroom 1:	3.4m x 3.3m
En-Suite:	2.6m x 2.4m
Bedroom 2:	3.9m x 2.5m
Bathroom:	2.4m x 1.7m



Apartment: 4/6

Dimensions	Metres
Lounge:	4.9m x 2.9m
Kitchen:	2.4m x 2.1m
Bedroom 1:	4.2m x 3.5m
En-Suite:	2.4m x 2.0m
Bedroom 2:	3.1m x 2.4m
Bathroom:	2.8m x 1.7m
Terrace:	5.3m x 1.1m



Apartment: 5/6

Dimensions	Metres
Lounge:	7.6m x 5.6m
Kitchen:	Inc
Utility:	1.7m x 1.6m
Bedroom 1:	3.7m x 3.3m
En-Suite:	2.1m x 1.2m
Bedroom 2:	4.2m x 3.5m
Dressing Area:	1.6m x 0.8m
Bathroom:	3.6m x 1.7m
Terrace:	11.5m x 1.3m



building on quality...

Credential never compromise on quality. That's why our recent projects including the iconic Templeton Building, Stirling Library and Bellhaven Terrace have produced homes for people who demand the very best. Credential are proud to give them just that...



www.credentialhomes.com

Please Note...

These particulars are for guidance only. They are prepared and issued in good faith and are intended to give a fair description of the property but do not constitute part of an offer or contract. Any description or information given should not be relied on as a statement or representation of fact or that the property or its services are in good condition. Any reference to alterations to, or use of, any part of the property is not a statement that any necessary planning, building regulations or other consent has been obtained. These matters must be verified by any intending purchaser. Neither Land & New Homes, Countrywide, Slater Hogg & Howison nor the Vendor of the property accept responsibility for any error these particulars may contain however caused. Any intending purchaser must therefore satisfy themselves by inspection or otherwise as to their correctness.

All photographs shown are indicative of the quality and style of the Development and location, and do not necessarily represent the actual fittings and furnishings at this Development. Window configurations vary between apartment types. All interested parties should consult the Sales Executive for the most up-to-date information. All plan dimensions shown are based on maximum measurements.

All particular correct at the time of print 12.6.09

www.virginia-galleries.co.uk